

**ALL ANIMALS**

	Jan	Feb	Mar	Apr	May	Jun	Jul	Aug	Sept	Oct	Nov	Dec	YTD
Live Release Rate	76%	78%	77%	73%	58%	51%	50%						63%
<b>Intake</b>	<b>1,847</b>	<b>1,860</b>	<b>2,246</b>	<b>2,618</b>	<b>2,921</b>	<b>3,389</b>	<b>3,534</b>						<b>18,415</b>
Stray	1,081	1,111	1,327	1,820	2,026	2,384	2,554						12,303
Owner Surrendered	719	698	869	750	843	955	901						5,735
Returned Adoption	45	49	43	48	52	50	77						364
Transferred In	2	2	7	-	-	-	2						13
<b>Live Release</b>	<b>1,452</b>	<b>1,453</b>	<b>1,681</b>	<b>1,644</b>	<b>1,534</b>	<b>1,667</b>	<b>1,678</b>						<b>11,109</b>
Adopted	376	326	421	332	421	546	650						3,072
Returned to Owner	60	85	76	87	76	62	87						533
Transferred to Rescue	1,016	1,042	1,184	1,225	1,037	1,059	941						7,504
<b>Euthanized</b>	<b>469</b>	<b>407</b>	<b>489</b>	<b>601</b>	<b>1,118</b>	<b>1,621</b>	<b>1,704</b>						<b>6,409</b>
<b>Died/Lost in Care</b>	<b>34</b>	<b>16</b>	<b>22</b>	<b>37</b>	<b>76</b>	<b>67</b>	<b>104</b>						<b>356</b>
Died	26	16	19	28	63	60	81						293
Missing	8	-	3	9	13	7	23						63
<b>Month End Animal Count</b>	<b>987</b>	<b>972</b>	<b>1,027</b>	<b>1,362</b>	<b>1,556</b>	<b>1,596</b>	<b>1,644</b>						<b>n/a</b>
<b>Fostered</b>	<b>89</b>	<b>95</b>	<b>158</b>	<b>389</b>	<b>383</b>	<b>333</b>	<b>391</b>						<b>1,838</b>
<b>Spayed/Neutered</b>	<b>486</b>	<b>502</b>	<b>602</b>	<b>457</b>	<b>618</b>	<b>725</b>	<b>863</b>						<b>4,253</b>

**DOGS**

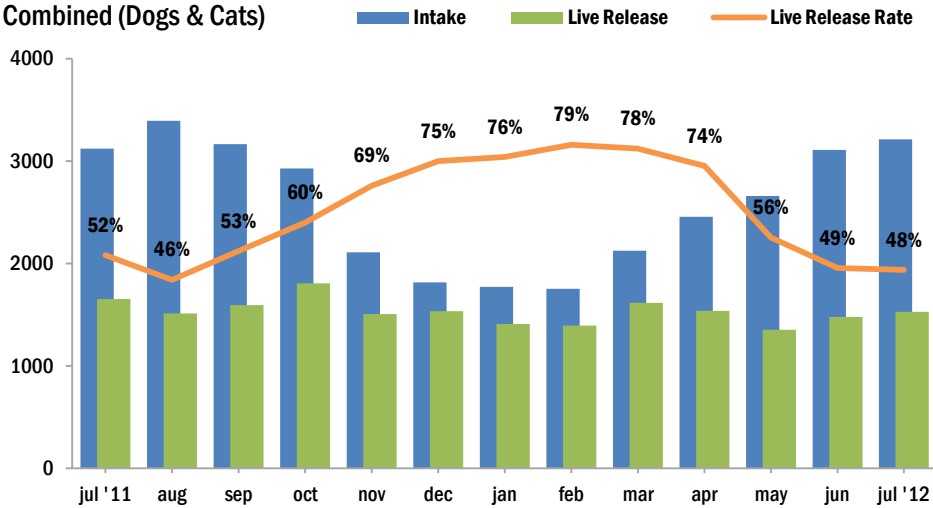
	Jan	Feb	Mar	Apr	May	Jun	Jul	Aug	Sept	Oct	Nov	Dec	YTD
Live Release Rate	68%	68%	66%	66%	62%	59%	62%						64%
<b>Intake</b>	<b>787</b>	<b>786</b>	<b>817</b>	<b>758</b>	<b>761</b>	<b>846</b>	<b>901</b>						<b>5,656</b>
Stray	414	421	402	382	357	443	493						2,912
Owner Surrendered	350	339	401	360	381	377	369						2,577
Returned Adoption	23	25	13	16	23	26	37						163
Transferred In	-	1	1	-	-	-	2						4
<b>Live Release</b>	<b>509</b>	<b>535</b>	<b>554</b>	<b>494</b>	<b>458</b>	<b>502</b>	<b>561</b>						<b>3,613</b>
Adopted	107	112	127	104	133	120	164						867
Returned to Owner	53	75	62	80	60	52	83						465
Transferred to Rescue	349	348	365	310	265	330	314						2,281
<b>Euthanized</b>	<b>242</b>	<b>256</b>	<b>278</b>	<b>260</b>	<b>278</b>	<b>352</b>	<b>342</b>						<b>2,008</b>
<b>Died/Lost in Care</b>	<b>6</b>	<b>5</b>	<b>3</b>	<b>4</b>	<b>4</b>	<b>3</b>	<b>8</b>						<b>33</b>
Died	4	5	2	2	3	3	8						27
Missing	2	-	1	2	1	-	-						6
<b>Month End Animal Count</b>	<b>263</b>	<b>253</b>	<b>235</b>	<b>235</b>	<b>255</b>	<b>248</b>	<b>238</b>						<b>n/a</b>
<b>Fostered</b>	<b>27</b>	<b>23</b>	<b>31</b>	<b>31</b>	<b>37</b>	<b>34</b>	<b>30</b>						<b>213</b>
<b>Spayed/Neutered</b>	<b>141</b>	<b>154</b>	<b>160</b>	<b>137</b>	<b>156</b>	<b>128</b>	<b>168</b>						<b>1,044</b>

Live Release Rate = Live Release / (Live Release + Euthanized); see <http://www.AsilomarAccords.org> for further information.  
The Live Release Rate does not include animals that died or were lost in care, or animals that were dead on arrival.

<b>CATS</b>													
	Jan	Feb	Mar	Apr	May	Jun	Jul	Aug	Sept	Oct	Nov	Dec	YTD
Live Release Rate	82%	89%	86%	79%	54%	45%	43%						63%
<b>Intake</b>	<b>985</b>	<b>967</b>	<b>1,306</b>	<b>1,697</b>	<b>1,898</b>	<b>2,263</b>	<b>2,310</b>						<b>11,426</b>
Stray	603	604	835	1,291	1,429	1,681	1,756						8,199
Owner Surrendered	358	339	438	374	440	558	514						3,021
Returned Adoption	22	24	30	32	29	24	40						201
Transferred In	2	-	3	-	-	-	-						5
<b>Live Release</b>	<b>899</b>	<b>858</b>	<b>1,060</b>	<b>1,043</b>	<b>893</b>	<b>975</b>	<b>965</b>						<b>6,693</b>
Adopted	267	211	286	227	283	421	484						2,179
Returned to Owner	7	6	14	7	16	10	2						62
Transferred to Rescue	625	641	760	809	594	544	479						4,452
<b>Euthanized</b>	<b>197</b>	<b>105</b>	<b>171</b>	<b>285</b>	<b>769</b>	<b>1,191</b>	<b>1,285</b>						<b>4,003</b>
<b>Died/Lost in Care</b>	<b>28</b>	<b>10</b>	<b>18</b>	<b>24</b>	<b>66</b>	<b>59</b>	<b>91</b>						<b>296</b>
Died	22	10	16	23	57	53	69						250
Missing	6	-	2	1	9	6	22						46
<b>Month End Animal Count</b>	<b>719</b>	<b>714</b>	<b>772</b>	<b>1,116</b>	<b>1,289</b>	<b>1,329</b>	<b>1,298</b>						<b>n/a</b>
<b>Fostered</b>	<b>62</b>	<b>71</b>	<b>127</b>	<b>357</b>	<b>346</b>	<b>298</b>	<b>360</b>						<b>1,621</b>
<b>Spayed/Neutered</b>	<b>342</b>	<b>343</b>	<b>440</b>	<b>318</b>	<b>461</b>	<b>597</b>	<b>695</b>						<b>3,196</b>

<b>SMALL ANIMALS AND WILDLIFE</b>													
	Jan	Feb	Mar	Apr	May	Jun	Jul	Aug	Sept	Oct	Nov	Dec	YTD
Live Release Rate	60%	57%	63%	66%	72%	71%	66%						67%
<b>Intake</b>	<b>75</b>	<b>107</b>	<b>123</b>	<b>163</b>	<b>262</b>	<b>280</b>	<b>323</b>						<b>1,333</b>
Stray	64	86	90	147	240	260	305						1,192
Owner Surrendered	11	20	30	16	22	20	18						137
Returned Adoption	-	-	-	-	-	-	-						-
Transferred In	-	1	3	-	-	-	-						4
<b>Live Release</b>	<b>44</b>	<b>60</b>	<b>67</b>	<b>107</b>	<b>183</b>	<b>190</b>	<b>152</b>						<b>803</b>
Adopted	2	3	8	1	5	5	2						26
Returned to Owner	-	4	-	-	-	-	2						6
Transferred to Rescue	42	53	59	106	178	185	148						771
<b>Euthanized</b>	<b>30</b>	<b>46</b>	<b>40</b>	<b>56</b>	<b>71</b>	<b>78</b>	<b>77</b>						<b>398</b>
<b>Died/Lost in Care</b>	<b>-</b>	<b>1</b>	<b>1</b>	<b>9</b>	<b>6</b>	<b>5</b>	<b>5</b>						<b>27</b>
Died	-	1	1	3	3	4	4						16
Missing	-	-	-	6	3	1	1						11
<b>Month End Animal Count</b>	<b>5</b>	<b>5</b>	<b>20</b>	<b>11</b>	<b>12</b>	<b>19</b>	<b>108</b>						<b>n/a</b>
<b>Fostered</b>	<b>-</b>	<b>1</b>	<b>-</b>	<b>1</b>	<b>-</b>	<b>1</b>	<b>1</b>						<b>4</b>
<b>Spayed/Neutered</b>	<b>3</b>	<b>5</b>	<b>2</b>	<b>2</b>	<b>1</b>	<b>-</b>	<b>-</b>						<b>13</b>

## Intake & Live Release Combined (Dogs & Cats)

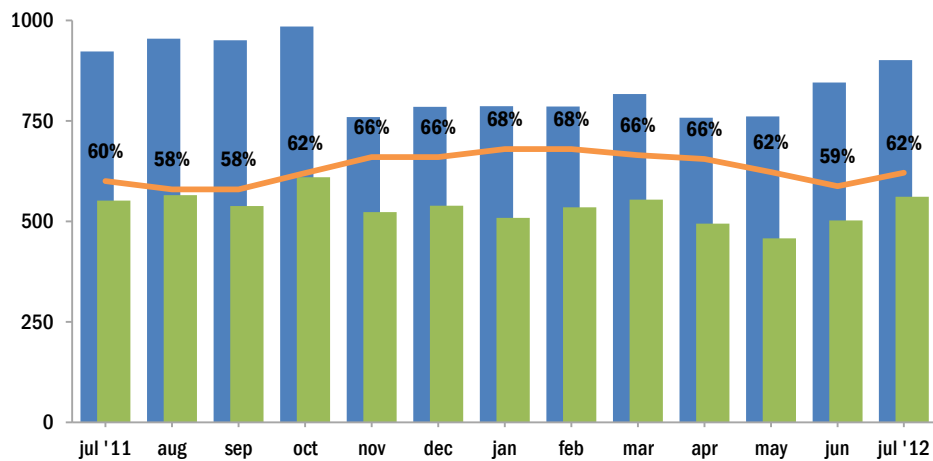


### NOTES:

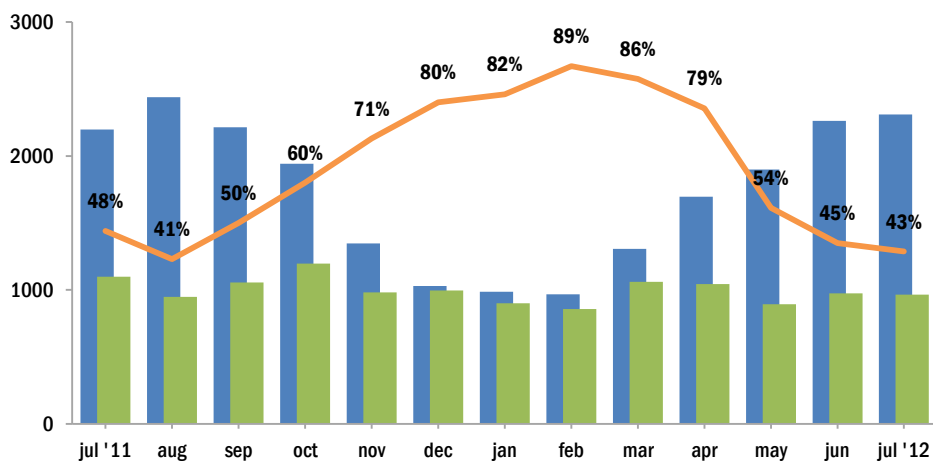
Live Release Rate, as dictated by the Asilomar Accords, the industry standard (see: [asilomaraccords.org](http://asilomaraccords.org)), is calculated by dividing Total Live Release (adoptions, outgoing transfers, and returns to owner) by Total Outcomes (adoptions, outgoing transfers, returns to owner, and euthanasias).

The Live Release Rate does not include animals that died or were lost in care, animals that were dead on arrival, or administrative transfers.

## Dogs

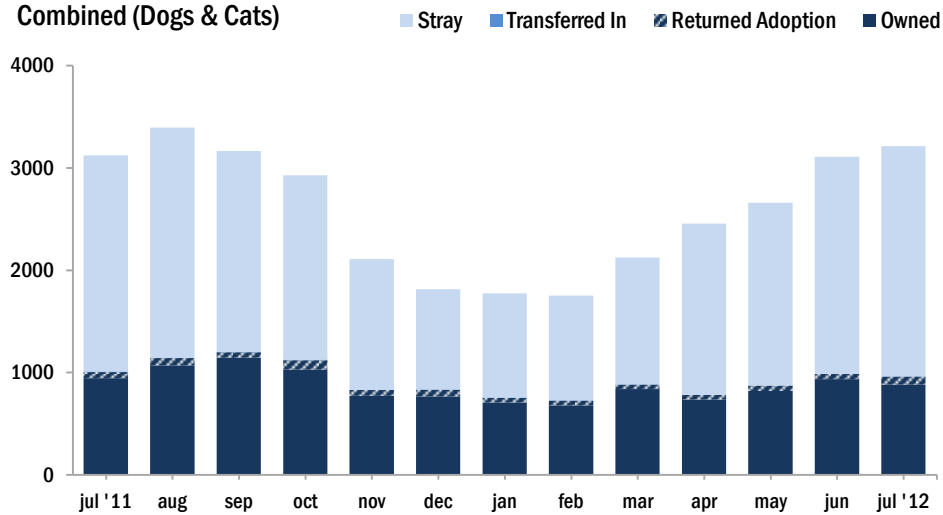


## Cats



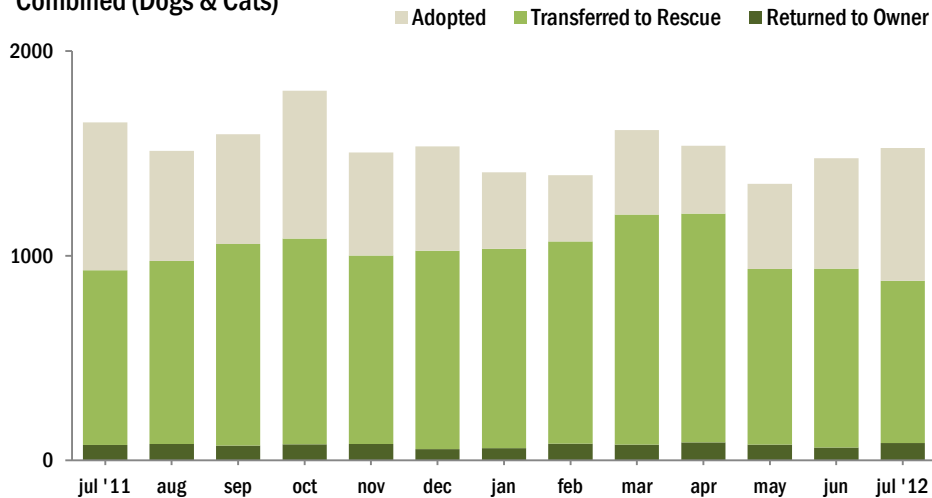
**Source of Intake**

Combined (Dogs & Cats)

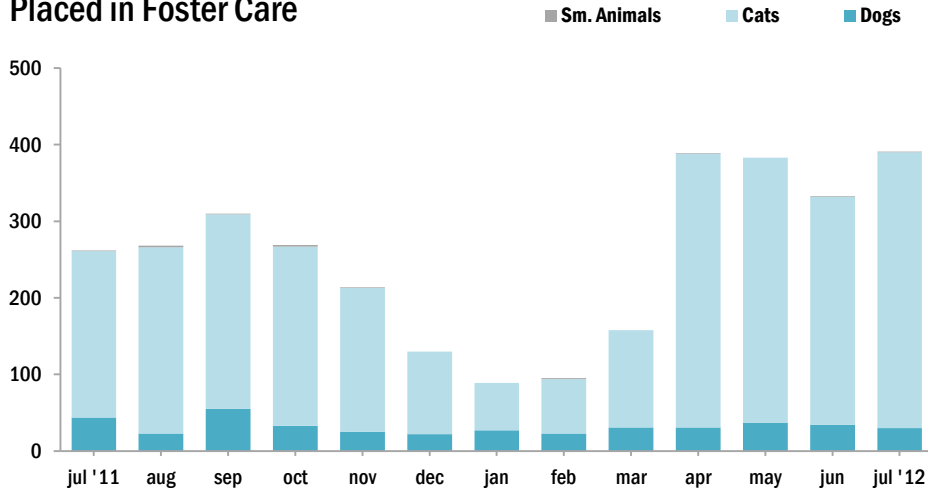


**Live Releases**

Combined (Dogs & Cats)



**Placed in Foster Care**



The **Foster Care Program** is one of the many life saving arms of ACCT Philly. The primary reason for foster care is to provide a temporary home for a potentially adoptable animal whose current condition is not manageable in a shelter setting and to alleviate overcrowding. ACCT Philly receives more animals than there is space, and so moving animals into foster homes not only saves them, but also ensures that newly arriving animals have cage space.

**Spay/Neuter Surgeries**

