

ALL ANIMALS

	Jan	Feb	Mar	Apr	May	Jun	Jul	Aug	Sept	Oct	Nov	Dec	YTD
Live Release Rate	76%	78%	77%	73%	58%	51%	50%	50%	55%	65%			61%
Intake	1,847	1,860	2,246	2,618	2,921	3,389	3,534	3,839	3,201	2,859			28,314
Stray	1,081	1,111	1,327	1,820	2,026	2,384	2,554	2,650	2,155	1,893			19,001
Owner Surrendered	719	698	869	750	843	955	901	1,100	986	882			8,703
Returned Adoption	45	49	43	48	52	50	77	89	59	81			593
Transferred In	2	2	7	-	-	-	2	-	1	3			17
Live Release	1,452	1,453	1,681	1,644	1,534	1,667	1,678	1,944	1,783	1,827			16,663
Adopted	376	326	421	332	421	546	650	670	676	685			5,103
Returned to Owner	60	85	76	87	76	62	87	75	79	76			763
Transferred to Rescue	1,016	1,042	1,184	1,225	1,037	1,059	941	1,199	1,028	1,066			10,797
Euthanized	469	407	489	601	1,118	1,621	1,704	1,920	1,456	976			10,761
Died/Lost in Care	34	16	22	37	76	67	104	76	50	68			550
Died	26	16	19	28	63	60	81	68	42	49			452
Missing	8	-	3	9	13	7	23	8	8	19			98
Month End Animal Count	987	972	1,027	1,362	1,556	1,596	1,644	1,545	1,459	1,448			n/a
Fostered	89	95	158	389	383	333	391	343	254	261			2,696
Spayed/Neutered	486	502	602	457	618	725	863	687	769	802			6,511

DOGS

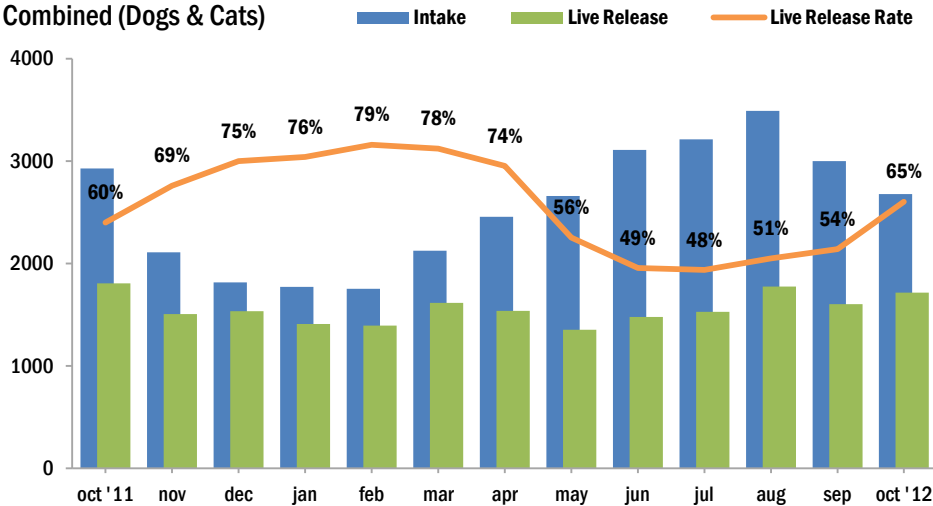
	Jan	Feb	Mar	Apr	May	Jun	Jul	Aug	Sept	Oct	Nov	Dec	YTD
Live Release Rate	68%	68%	66%	66%	62%	59%	62%	58%	57%	64%			63%
Intake	787	786	817	758	761	846	901	975	949	941			8,521
Stray	414	421	402	382	357	443	493	520	528	520			4,480
Owner Surrendered	350	339	401	360	381	377	369	418	403	388			3,786
Returned Adoption	23	25	13	16	23	26	37	37	17	32			249
Transferred In	-	1	1	-	-	-	2	-	1	1			6
Live Release	509	535	554	494	458	502	561	580	534	590			5,317
Adopted	107	112	127	104	133	120	164	161	122	135			1,285
Returned to Owner	53	75	62	80	60	52	83	61	67	71			664
Transferred to Rescue	349	348	365	310	265	330	314	358	345	384			3,368
Euthanized	242	256	278	260	278	352	342	413	395	326			3,142
Died/Lost in Care	6	5	3	4	4	3	8	7	5	7			52
Died	4	5	2	2	3	3	8	7	4	4			42
Missing	2	-	1	2	1	-	-	-	1	3			10
Month End Animal Count	263	253	235	235	255	248	238	213	229	247			n/a
Fostered	27	23	31	31	37	34	30	24	43	47			327
Spayed/Neutered	141	154	160	137	156	128	168	167	182	213			1,606

Live Release Rate = Live Release / (Live Release + Euthanized); see <http://www.AsilomarAccords.org> for further information.
The Live Release Rate does not include animals that died or were lost in care, or animals that were dead on arrival.

CATS													
	Jan	Feb	Mar	Apr	May	Jun	Jul	Aug	Sept	Oct	Nov	Dec	YTD
Live Release Rate	82%	89%	86%	79%	54%	45%	43%	48%	52%	65%			59%
Intake	985	967	1,306	1,697	1,898	2,263	2,310	2,514	2,050	1,736			17,726
Stray	603	604	835	1,291	1,429	1,681	1,756	1,826	1,450	1,227			12,702
Owner Surrendered	358	339	438	374	440	558	514	636	558	459			4,674
Returned Adoption	22	24	30	32	29	24	40	52	42	48			343
Transferred In	2	-	3	-	-	-	-	-	-	2			7
Live Release	899	858	1,060	1,043	893	975	965	1,193	1,069	1,126			10,081
Adopted	267	211	286	227	283	421	484	503	552	548			3,782
Returned to Owner	7	6	14	7	16	10	2	14	10	5			91
Transferred to Rescue	625	641	760	809	594	544	479	676	507	573			6,208
Euthanized	197	105	171	285	769	1,191	1,285	1,273	998	596			6,870
Died/Lost in Care	28	10	18	24	66	59	91	66	42	49			453
Died	22	10	16	23	57	53	69	58	35	40			383
Missing	6	-	2	1	9	6	22	8	7	9			70
Month End Animal Count	719	714	772	1,116	1,289	1,329	1,298	1,280	1,222	1,188			n/a
Fostered	62	71	127	357	346	298	360	319	209	213			2,362
Spayed/Neutered	342	343	440	318	461	597	695	520	587	589			4,892

SMALL ANIMALS AND WILDLIFE													
	Jan	Feb	Mar	Apr	May	Jun	Jul	Aug	Sept	Oct	Nov	Dec	YTD
Live Release Rate	60%	57%	63%	66%	72%	71%	66%	42%	74%	67%			63%
Intake	75	107	123	163	262	280	323	350	202	182			2,067
Stray	64	86	90	147	240	260	305	304	177	146			1,819
Owner Surrendered	11	20	30	16	22	20	18	46	25	35			243
Returned Adoption	-	-	-	-	-	-	-	-	-	1			1
Transferred In	-	1	3	-	-	-	-	-	-	-			4
Live Release	44	60	67	107	183	190	152	171	180	111			1,265
Adopted	2	3	8	1	5	5	2	6	2	2			36
Returned to Owner	-	4	-	-	-	-	2	-	2	-			8
Transferred to Rescue	42	53	59	106	178	185	148	165	176	109			1,221
Euthanized	30	46	40	56	71	78	77	234	63	54			749
Died/Lost in Care	-	1	1	9	6	5	5	3	3	12			45
Died	-	1	1	3	3	4	4	3	3	5			27
Missing	-	-	-	6	3	1	1	-	-	7			18
Month End Animal Count	5	5	20	11	12	19	108	52	8	13			n/a
Fostered	-	1	-	1	-	1	1	-	2	1			7
Spayed/Neutered	3	5	2	2	1	-	-	-	-	-			13

Intake & Live Release Combined (Dogs & Cats)

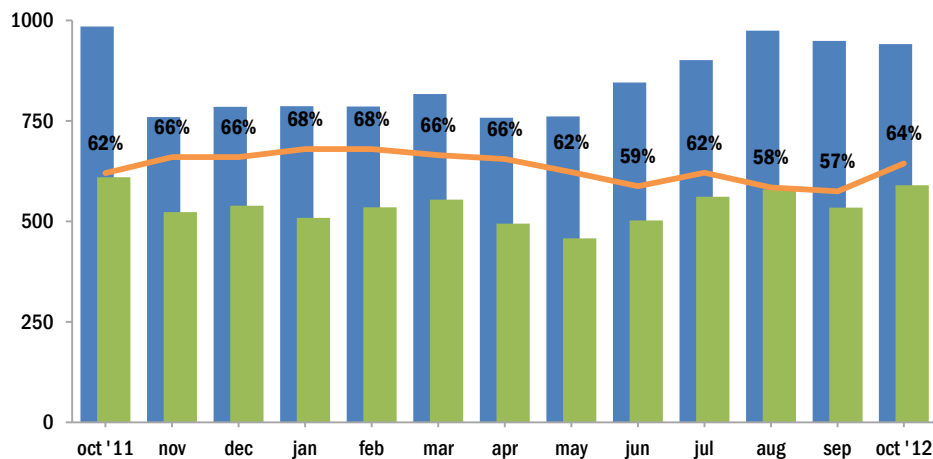


NOTES:

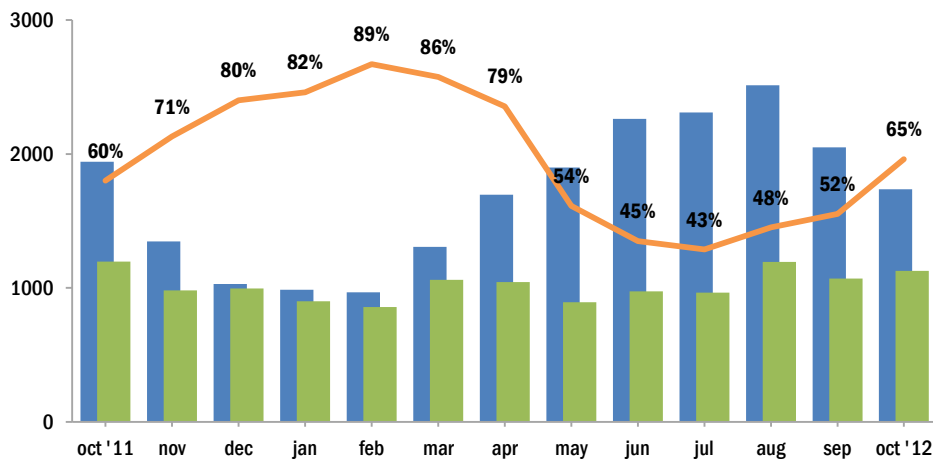
Live Release Rate, as dictated by the Asilomar Accords, the industry standard (see: asilomaraccords.org), is calculated by dividing Total Live Release (adoptions, outgoing transfers, and returns to owner) by Total Outcomes (adoptions, outgoing transfers, returns to owner, and euthanasias).

The Live Release Rate does not include animals that died or were lost in care, animals that were dead on arrival, or administrative transfers.

Dogs

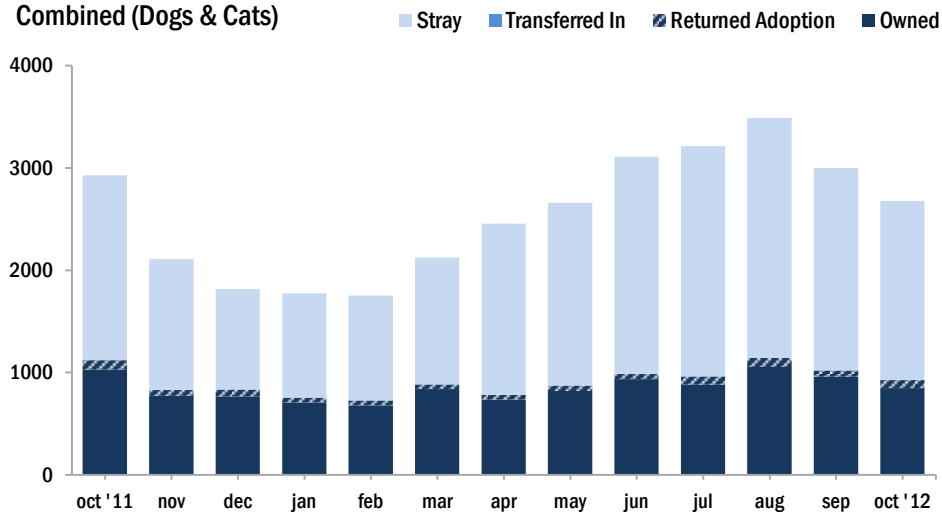


Cats



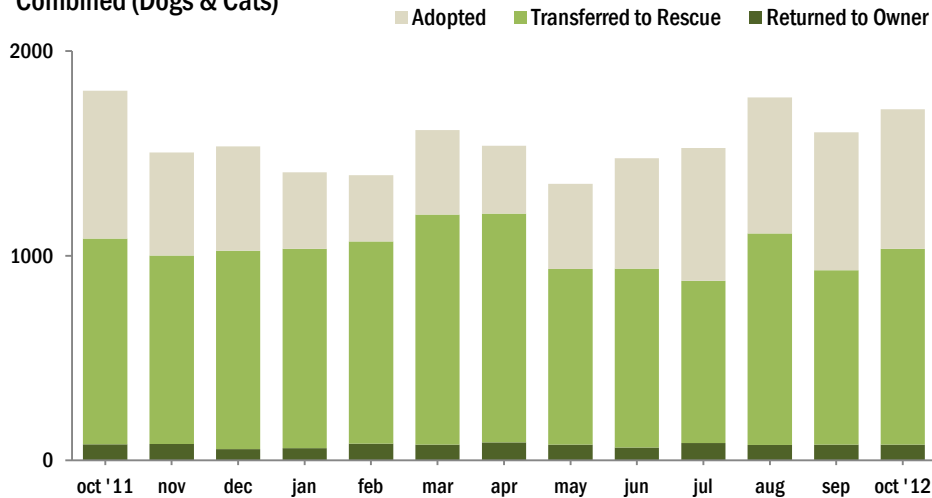
Source of Intake

Combined (Dogs & Cats)

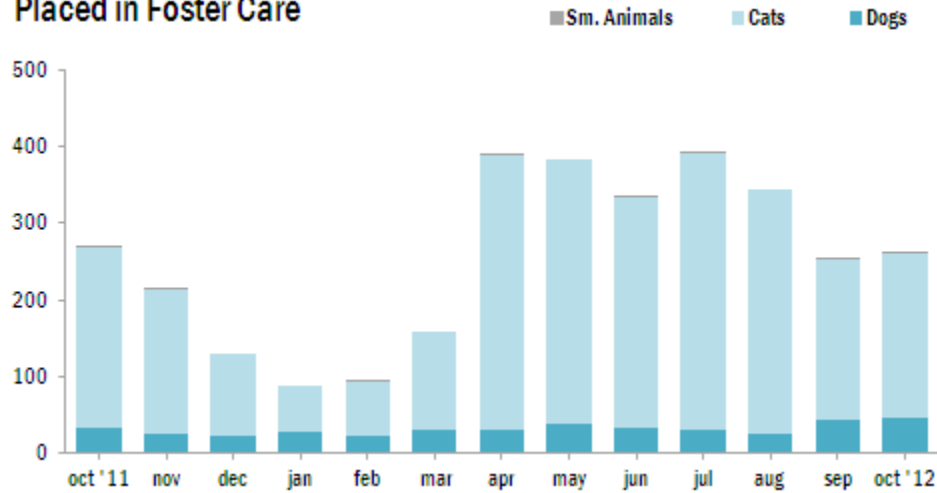


Live Releases

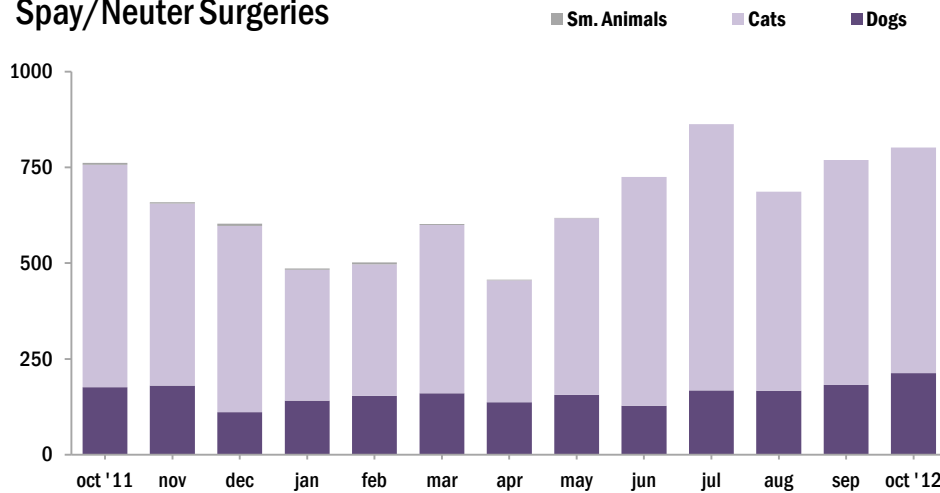
Combined (Dogs & Cats)



Placed in Foster Care



Spay/Neuter Surgeries



The **Foster Care Program** is one of the many life saving arms of ACCT Philly. The primary reason for foster care is to provide a temporary home for a potentially adoptable animal whose current condition is not manageable in a shelter setting and to alleviate overcrowding. ACCT Philly receives more animals than there is space, and so moving animals into foster homes not only saves them, but also ensures that newly arriving animals have cage space.