

# Animal Care and Control Team of Philadelphia

2013 Animal Care Statistics

All Animals	Jan	Feb	Mar	Apr	May	Jun	Jul	Aug	Sept	Oct	Nov	Dec	YTD
Intake	1,844	1,778											3,622
Stray	1,050	1,063											2,113
Owner Surrendered	705	633											1,338
Returned Adoption	73	67											140
Transferred In	16	15											31
Live Release	1,455	1,434											2,889
Adopted	508	433											941
Returned to Owner	86	77											163
Transferred to Rescue	861	924											1,785
Euthanized	475	407											882
Died or Lost in Care	49	27											76
Died	40	20											60
Missing	9	7											16

Dogs	Jan	Feb	Mar	Apr	May	Jun	Jul	Aug	Sept	Oct	Nov	Dec	YTD
Intake	822	734											1,556
Stray	429	370											799
Owner Surrendered	353	332											685
Returned Adoption	28	28											56
Transferred In	12	4											16
Live Release	535	522											1,057
Adopted	153	137											290
Returned to Owner	78	69											147
Transferred to Rescue	304	316											620
Euthanized	274	214											488
Died or Lost in Care	4	5											9
Died	3	5											8
Missing	1	-											1

# Animal Care and Control Team of Philadelphia

2013 Animal Care Statistics

## Cats

	Jan	Feb	Mar	Apr	May	Jun	Jul	Aug	Sept	Oct	Nov	Dec	YTD
<b>Intake</b>	916	942											1,858
Stray	539	616											1,155
Owner Surrendered	328	278											606
Returned Adoption	45	39											84
Transferred In	4	9											13
<b>Live Release</b>	863	854											1,717
Adopted	351	294											645
Returned to Owner	7	8											15
Transferred to Rescue	505	552											1,057
<b>Euthanized</b>	158	151											309
<b>Died or Lost in Care</b>	43	19											62
Died	35	12											47
Missing	8	7											15

## Small Animals & Wildlife

	Jan	Feb	Mar	Apr	May	Jun	Jul	Aug	Sept	Oct	Nov	Dec	YTD
<b>Intake</b>	106	102											208
Stray	82	77											159
Owner Surrendered	24	23											47
Returned Adoption	-	-											-
Transferred In	-	2											2
<b>Live Release</b>	57	58											115
Adopted	4	2											6
Returned to Owner	1	-											1
Transferred or Released	52	56											108
<b>Euthanized</b>	43	42											85
<b>Died or Lost in Care</b>	2	3											5
Died	2	3											5
Missing	-	-											-

# Animal Care and Control Team of Philadelphia

2013 Animal Care Statistics

Live Release Rate	Jan	Feb	Mar	Apr	May	Jun	Jul	Aug	Sept	Oct	Nov	Dec	YTD
Total	75%	78%											77%
Dogs	66%	71%											68%
Cats	85%	85%											85%
Sm. Animals & Wildlife	57%	58%											58%

Live Release Rate = Live Release / (Live Release + Euthanized) \* 100%; see [asilomaraccords.org](http://asilomaraccords.org) for further information.

The Live Release Rate does not include animals that died or were lost in care, or animals that were dead on arrival.

## Spay/Neuter

Surgeries	Jan	Feb	Mar	Apr	May	Jun	Jul	Aug	Sept	Oct	Nov	Dec	YTD
Total	582	507											1,089
Dogs	199	172											371
Cats	383	333											716
Sm. Animals & Wildlife	-	2											2

## Placed in Foster Care

	Jan	Feb	Mar	Apr	May	Jun	Jul	Aug	Sept	Oct	Nov	Dec	YTD
Total	152	84											236
Dogs	48	27											75
Cats	102	56											158
Sm. Animals & Wildlife	2	1											3

## Month End Animal

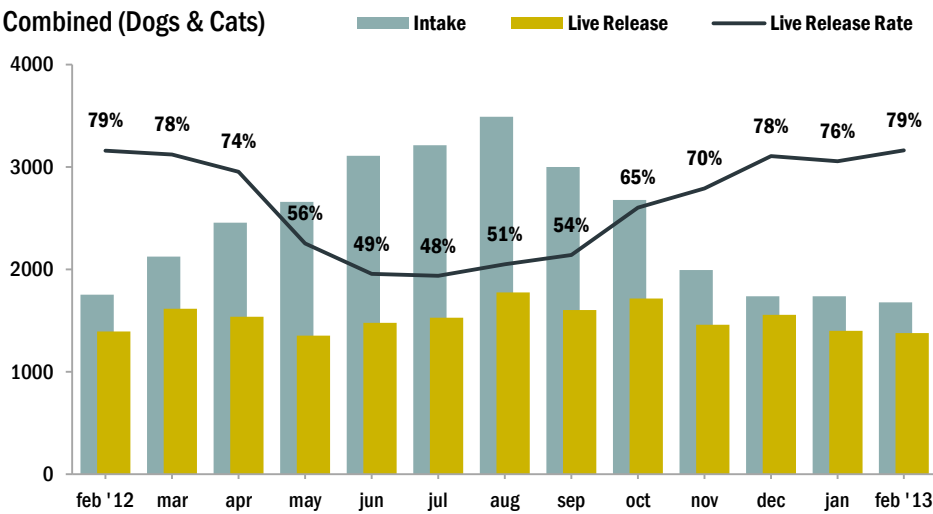
Count	Jan	Feb	Mar	Apr	May	Jun	Jul	Aug	Sept	Oct	Nov	Dec	YTD
Total	832	742											n/a
Dogs	219	211											n/a
Cats	600	519											n/a
Sm. Animals & Wildlife	13	12											n/a

# Animal Care and Control Team of Philadelphia

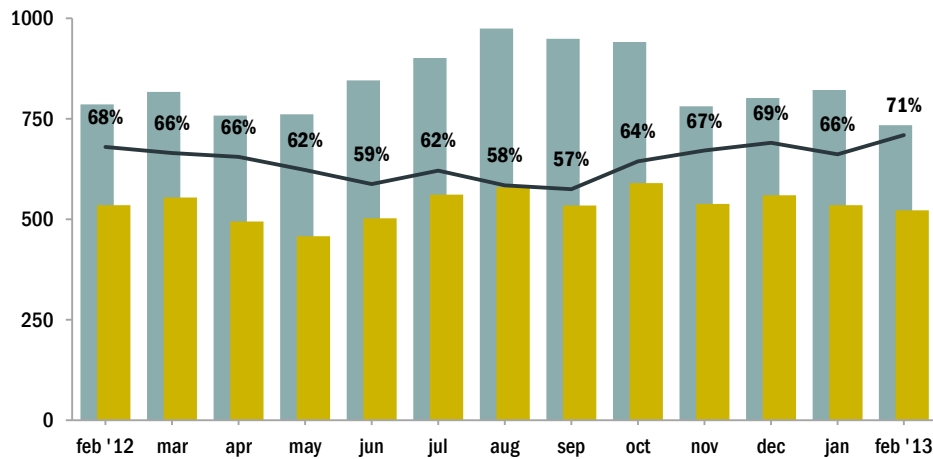
## 2013 Animal Care Statistics

### Intake & Live Release

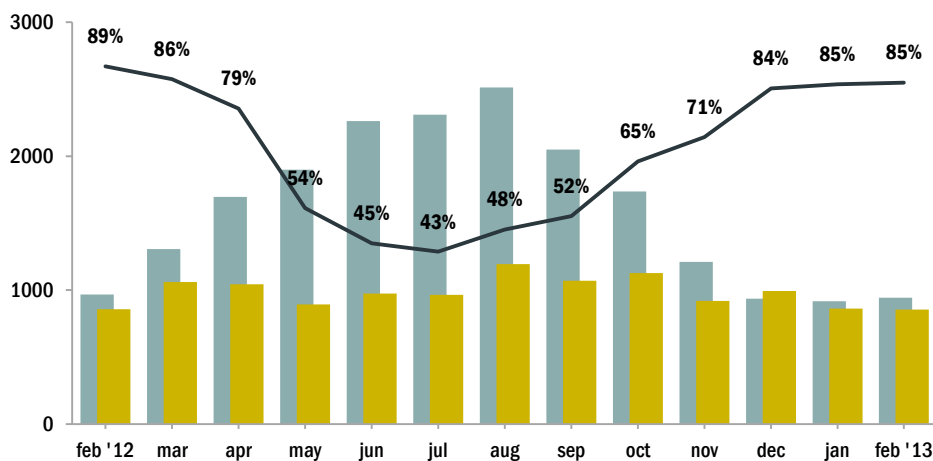
Combined (Dogs & Cats)



### Dogs



### Cats



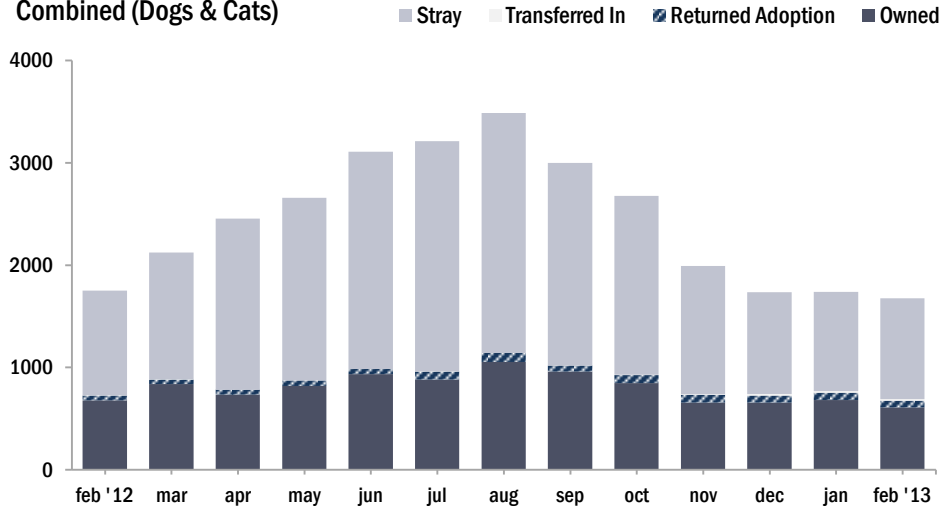
#### NOTES:

Live Release Rate, as dictated by the Asilomar Accords, the industry standard (see: [asilomaraccords.org](http://asilomaraccords.org)), is calculated by dividing Total Live Release (adoptions, transfers to partner organizations, and returns to owner) by Total Outcomes (adoptions, outgoing transfers, returns to owner, and euthanasias).

The Live Release Rate does not include animals that died or were lost in care, animals that were dead on arrival, or administrative transfers.

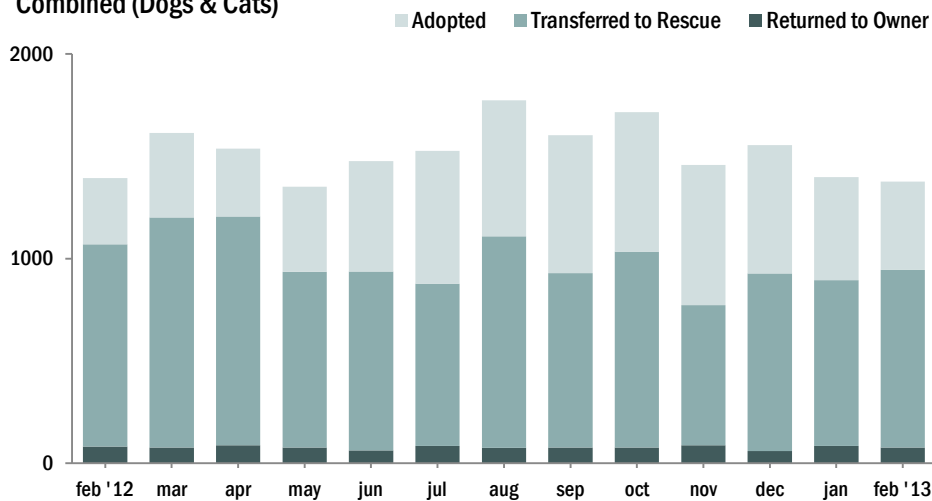
### Source of Intake

Combined (Dogs & Cats)

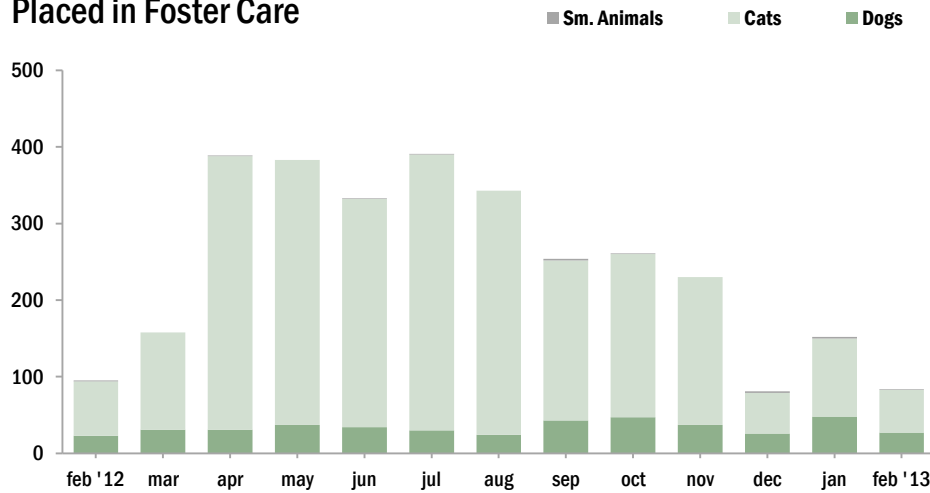


### Live Releases

Combined (Dogs & Cats)



### Placed in Foster Care



**The Foster Care Program** is one of the many life saving arms of ACCT Philly. The primary reason for foster care is to provide a temporary home for a potentially adoptable animal whose current condition is not manageable in a shelter setting and to alleviate overcrowding. ACCT Philly receives more animals than there is space, and so moving animals into foster homes not only saves them, but also ensures that newly arriving animals have cage space.

### Spay/Neuter Surgeries

