

Animal Care and Control Team of Philadelphia

2013 Animal Care Statistics

All Animals	Jan	Feb	Mar	Apr	May	Jun	Jul	Aug	Sept	Oct	Nov	Dec	YTD
Intake	1,844	1,778	2,013										5,635
Stray	1,050	1,063	1,134										3,247
Owner Surrendered	705	633	792										2,130
Returned Adoption	73	67	69										209
Transferred In	16	15	18										49
Live Release	1,455	1,434	1,500										4,389
Adopted	508	433	400										1,341
Returned to Owner	86	77	81										244
Transferred to Rescue	861	924	1,019										2,804
Euthanized	475	407	502										1,384
Died or Lost in Care	49	27	24										100
Died	40	20	23										83
Missing	9	7	1										17

Dogs	Jan	Feb	Mar	Apr	May	Jun	Jul	Aug	Sept	Oct	Nov	Dec	YTD
Intake	822	734	767										2,323
Stray	429	370	367										1,166
Owner Surrendered	353	332	370										1,055
Returned Adoption	28	28	25										81
Transferred In	12	4	5										21
Live Release	535	522	487										1,544
Adopted	153	137	129										419
Returned to Owner	78	69	74										221
Transferred to Rescue	304	316	284										904
Euthanized	274	214	284										772
Died or Lost in Care	4	5	4										13
Died	3	5	4										12
Missing	1	-	-										1

Animal Care and Control Team of Philadelphia

2013 Animal Care Statistics

Cats

	Jan	Feb	Mar	Apr	May	Jun	Jul	Aug	Sept	Oct	Nov	Dec	YTD
Intake	916	942	1,125										2,983
Stray	539	616	670										1,825
Owner Surrendered	328	278	398										1,004
Returned Adoption	45	39	44										128
Transferred In	4	9	13										26
Live Release	863	854	940										2,657
Adopted	351	294	269										914
Returned to Owner	7	8	7										22
Transferred to Rescue	505	552	664										1,721
Euthanized	158	151	172										481
Died or Lost in Care	43	19	15										77
Died	35	12	14										61
Missing	8	7	1										16

Small Animals & Wildlife

	Jan	Feb	Mar	Apr	May	Jun	Jul	Aug	Sept	Oct	Nov	Dec	YTD
Intake	106	102	121										329
Stray	82	77	97										256
Owner Surrendered	24	23	24										71
Returned Adoption	-	-	-										-
Transferred In	-	2	-										2
Live Release	57	58	73										188
Adopted	4	2	2										8
Returned to Owner	1	-	-										1
Transferred or Released	52	56	71										179
Euthanized	43	42	46										131
Died or Lost in Care	2	3	5										10
Died	2	3	5										10
Missing	-	-	-										-

Animal Care and Control Team of Philadelphia

2013 Animal Care Statistics

Live Release Rate	Jan	Feb	Mar	Apr	May	Jun	Jul	Aug	Sept	Oct	Nov	Dec	YTD
Total	75%	78%	75%										76%
Dogs	66%	71%	63%										67%
Cats	85%	85%	85%										85%
Sm. Animals & Wildlife	57%	58%	61%										59%

Live Release Rate = Live Release / (Live Release + Euthanized) * 100%; see asilomaraccords.org for further information.

The Live Release Rate does not include animals that died or were lost in care, or animals that were dead on arrival.

Spay/Neuter

Surgeries	Jan	Feb	Mar	Apr	May	Jun	Jul	Aug	Sept	Oct	Nov	Dec	YTD
Total	582	507	493										1,582
Dogs	199	172	166										537
Cats	383	333	327										1,043
Sm. Animals & Wildlife	-	2	-										2

Placed in Foster Care

	Jan	Feb	Mar	Apr	May	Jun	Jul	Aug	Sept	Oct	Nov	Dec	YTD
Total	152	84	113										349
Dogs	48	27	28										103
Cats	102	56	84										242
Sm. Animals & Wildlife	2	1	1										4

Month End Animal

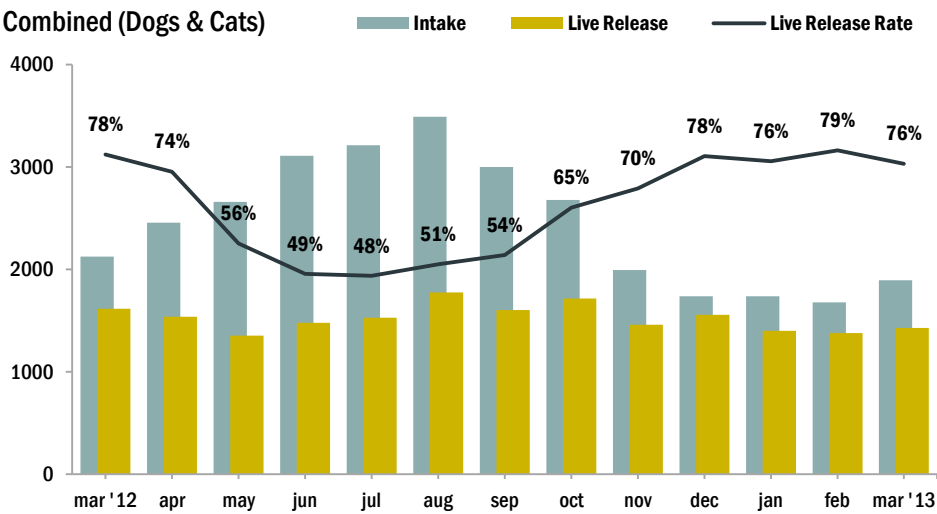
Count	Jan	Feb	Mar	Apr	May	Jun	Jul	Aug	Sept	Oct	Nov	Dec	YTD
Total	832	742	730										n/a
Dogs	219	211	203										n/a
Cats	600	519	518										n/a
Sm. Animals & Wildlife	13	12	9										n/a

Animal Care and Control Team of Philadelphia

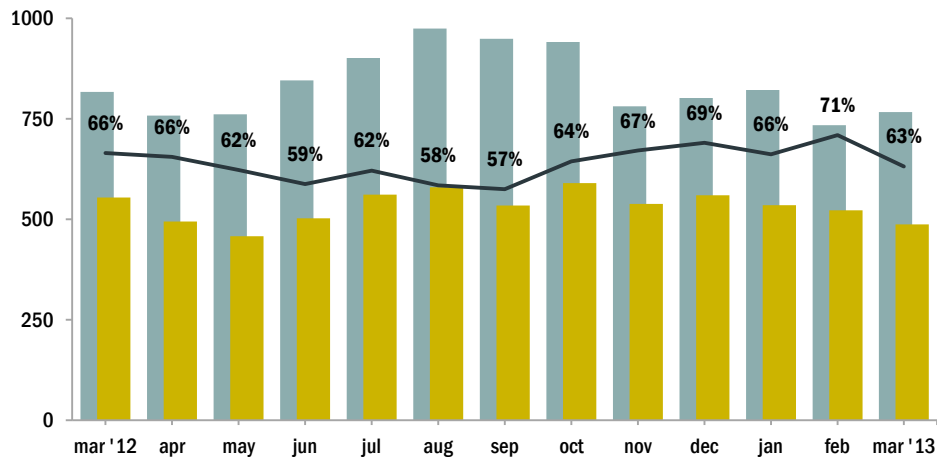
2013 Animal Care Statistics

Intake & Live Release

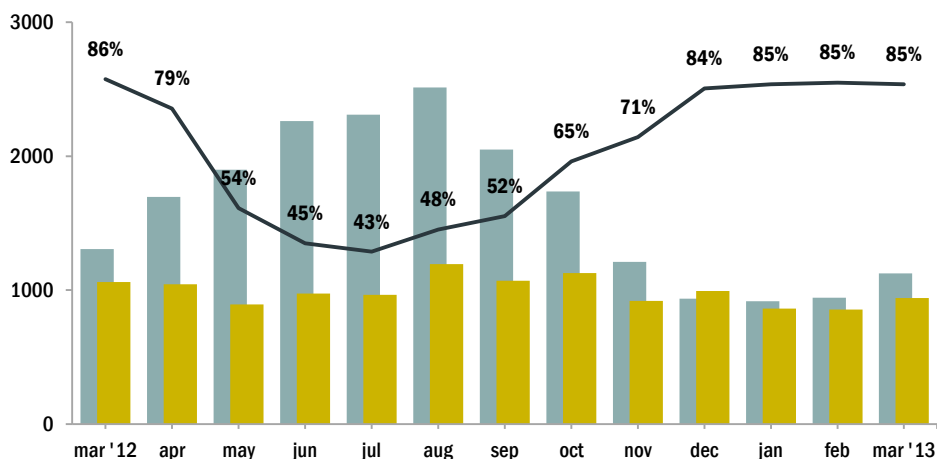
Combined (Dogs & Cats)



Dogs



Cats



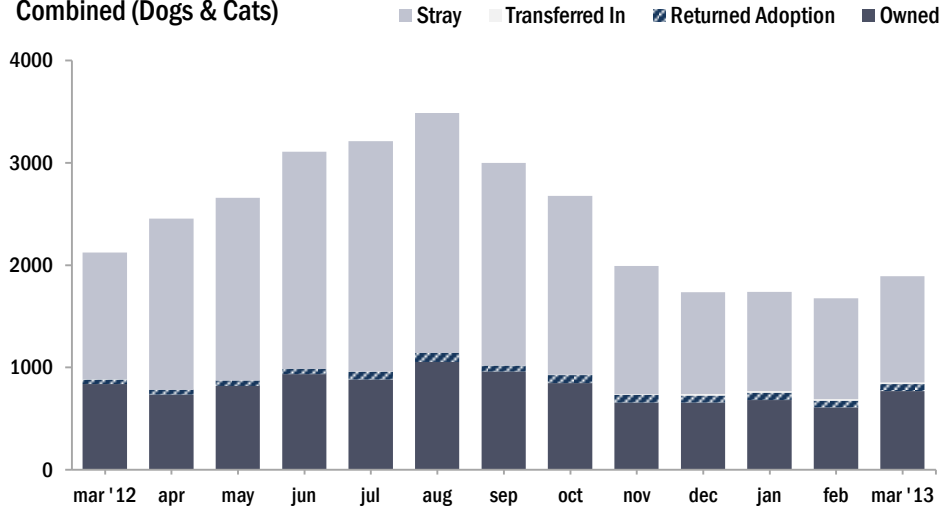
NOTES:

Live Release Rate, as dictated by the Asilomar Accords, the industry standard (see: asilomaraccords.org), is calculated by dividing Total Live Release (adoptions, transfers to partner organizations, and returns to owner) by Total Outcomes (adoptions, outgoing transfers, returns to owner, and euthanasias).

The Live Release Rate does not include animals that died or were lost in care, animals that were dead on arrival, or administrative transfers.

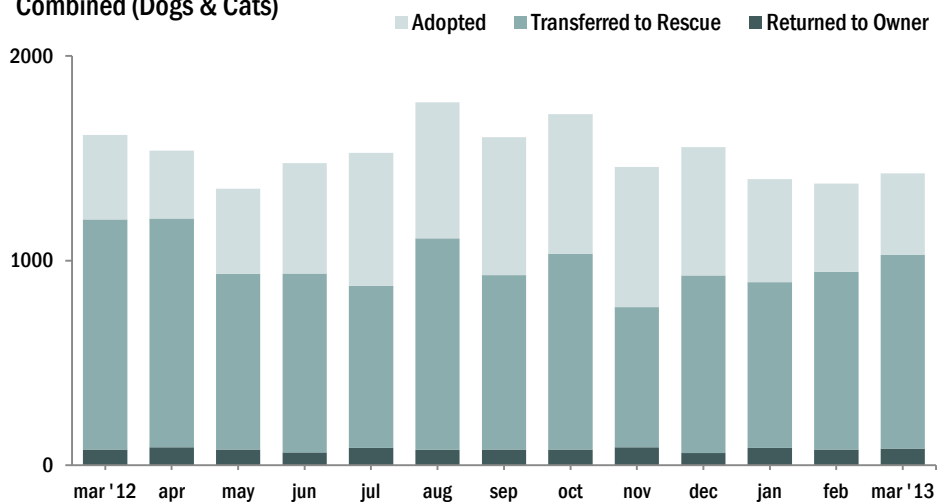
Source of Intake

Combined (Dogs & Cats)

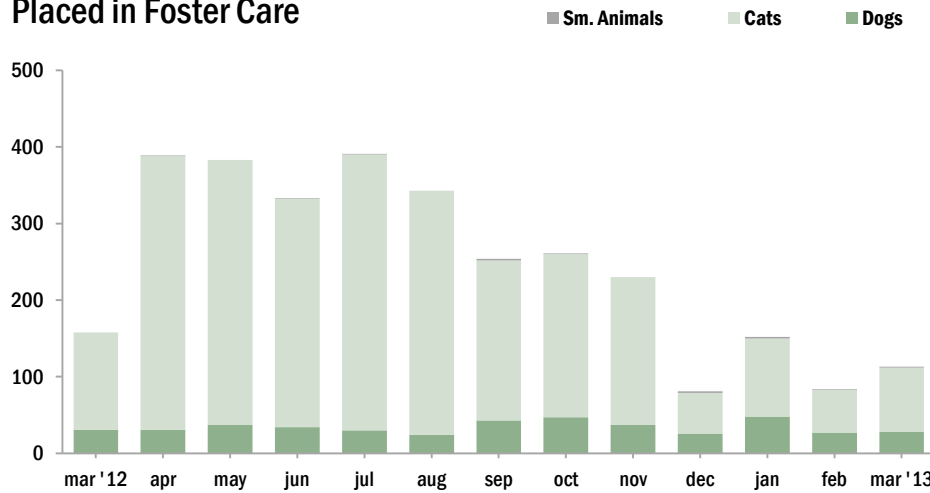


Live Releases

Combined (Dogs & Cats)



Placed in Foster Care



The Foster Care Program is one of the many life saving arms of ACCT Philly. The primary reason for foster care is to provide a temporary home for a potentially adoptable animal whose current condition is not manageable in a shelter setting and to alleviate overcrowding. ACCT Philly receives more animals than there is space, and so moving animals into foster homes not only saves them, but also ensures that newly arriving animals have cage space.

Spay/Neuter Surgeries

