

PSPCA Animal Care and Control Team
Monthly Animal Intake and Disposition Statistics
JANUARY 2012

INTAKE

Animal Intake	<i>Dogs</i>	<i>Cats</i>	<i>Other</i>	<i>Total</i>	<i>Total</i>
				<i>Dog & Cat</i>	<i>All</i>
Total Live Intake	787	985	75	1,772	1,847
Owner Surrendered	350	358	11	708	719
Returned Adoption	23	22	-	45	45
Stray	414	603	64	1,017	1,081
Transferred In	-	2	-	2	2
DOA Intake	70	69	15	139	154

SHELTER ANIMAL COUNT

Beginning Shelter Count	<i>Dogs</i>	<i>Cats</i>	<i>Other</i>	<i>Total</i>	<i>Total</i>
				<i>Dog & Cat</i>	<i>All</i>
in Kennel	135	112	2	247	249
in Foster Care	98	746	2	844	846
Ending Shelter Count	263	719	5	982	987
in Kennel	160	83	4	243	247
in Foster Care	103	636	1	739	740

OUTCOME

Live Release	<i>Dogs</i>	<i>Cats</i>	<i>Other</i>	<i>Total</i>	<i>Total</i>
				<i>Dog & Cat</i>	<i>All</i>
Total Live Release	509	899	44	1,408	1,452
Adopted	107	267	2	374	376
Returned to Owner	53	7	-	60	60
Transferred to Rescue	266	274	38	540	578
Transferred to PSPCA*	83	351	4	434	438

* Includes animals transferred for adoptions, medical care and cruelty investigations

Euthanasia

Total Euthanized	242	197	30	439	469
------------------	------------	------------	-----------	------------	------------

Died or Lost in Shelter/Care

Total Died/Lost	76	97	15	173	188
Died in Kennel	3	6	-	9	9
Died in Foster	1	16	-	17	17
Missing	2	6	-	8	8
DOA	70	69	15	139	154

PSPCA Animal Care and Control Team
Monthly Animal Intake and Disposition Statistics
JANUARY 2012

OUTCOMES OF PSPCA TRANSFERS

Of animals transferred to PSPCA Headquarters, the following outcomes were reported:

	<i>Dogs</i>	<i>Cats</i>	<i>Other</i>	<i>Total Dog & Cat</i>	<i>Total All</i>
Adopted	57	279	3	336	339
Returned to Owner	2	3	-	5	5
Transferred to Rescue	4	-	1	4	5
Euthanized	2	1	-	3	3
Died in Kennel	-	-	-	-	-
Missing	-	-	-	-	-
in Kennel	18	68	-	86	86

LIVE RELEASE RATE

Live Release Rate, as dictated by the Asilomar Accords, is calculated by dividing Total Live Release (adoptions, outgoing transfers and return to owner/guardian) by the sum of Total Live Release and Total Euthanasia. Because Administrative Transfers represent database maintenance and not actual live releases, they are not included in Total Live Release. Additionally, in order to accurately represent the outcomes of animals in ACCT's care, those that were transferred to PSPCA Headquarters but were ultimately euthanized have been deducted from the ACCT Live Release Total and added to Euthanasia Total in the calculation.

The Live Release Rate does not include 34 animals that died or were lost in the shelter/care, 154 animals that were dead on arrival, or 0 administrative transfers.

	<i>Dogs</i>	<i>Cats</i>	<i>Other</i>	<i>Total Dog & Cat</i>	<i>Total All</i>
Live Release Rate	67.5%	81.9%	59.5%	76.1%	75.4%

FOSTER CARE PROGRAM

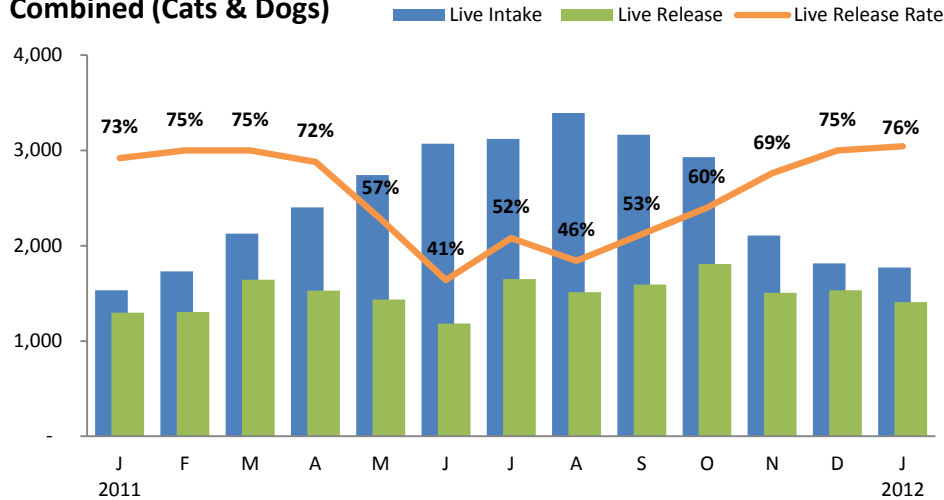
The ACCT Foster Program is one of the many life saving arms of the PSPCA. The primary reason for foster care is to provide a temporary home for a potentially adoptable animal whose current condition is not manageable in a shelter setting and to alleviate overcrowding. ACCT receives more animals than there is space, and so moving animals into foster homes not only saves them, but also ensures that newly arriving animals have cage space.

	<i>Dogs</i>	<i>Cats</i>	<i>Other</i>	<i>Total Dog & Cat</i>	<i>Total All</i>
Placed in Foster this Month	27	62	-	89	89

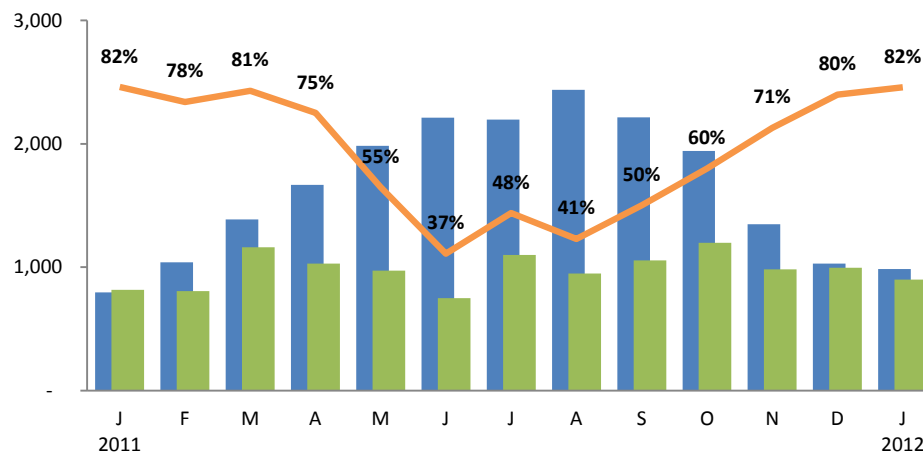
ACCT Animal Intakes and Outcomes

Intake and Live Release

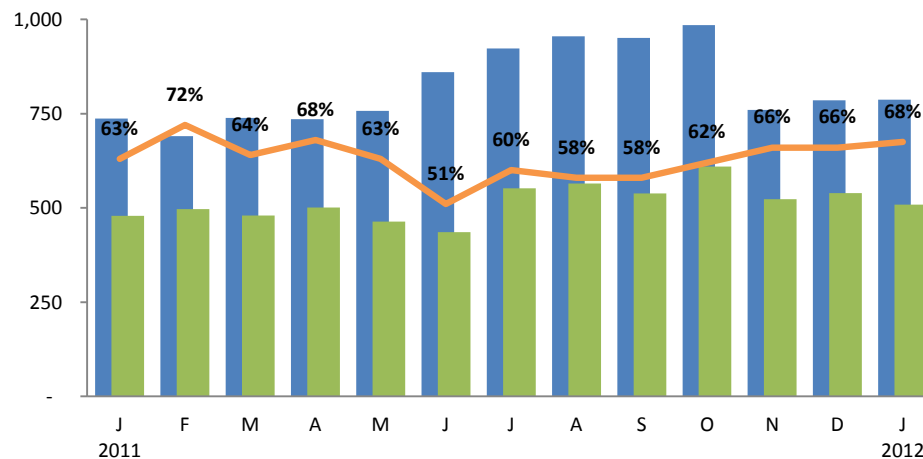
Combined (Cats & Dogs)



Cats



Dogs



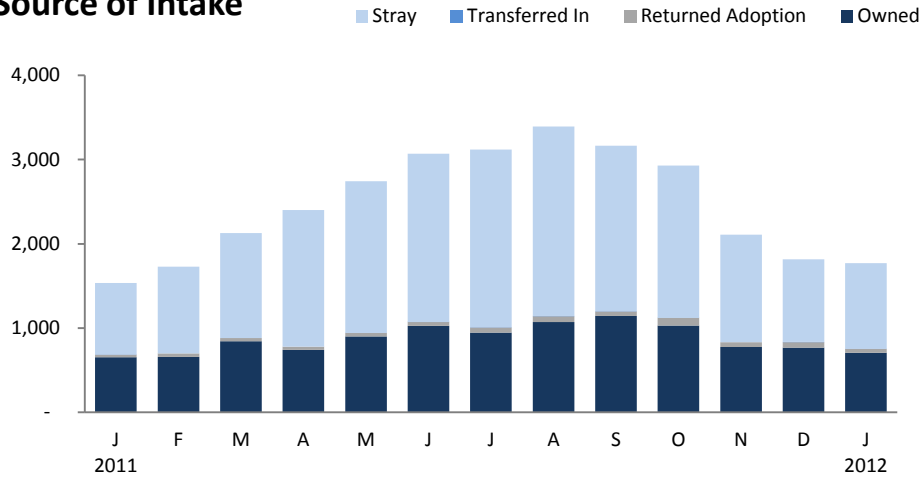
NOTES:

ACCT Animal Intakes and Outcomes includes only cats and dogs. For data including other animals (small mammals, exotics, wildlife, etc.) please see the attached spreadsheet.

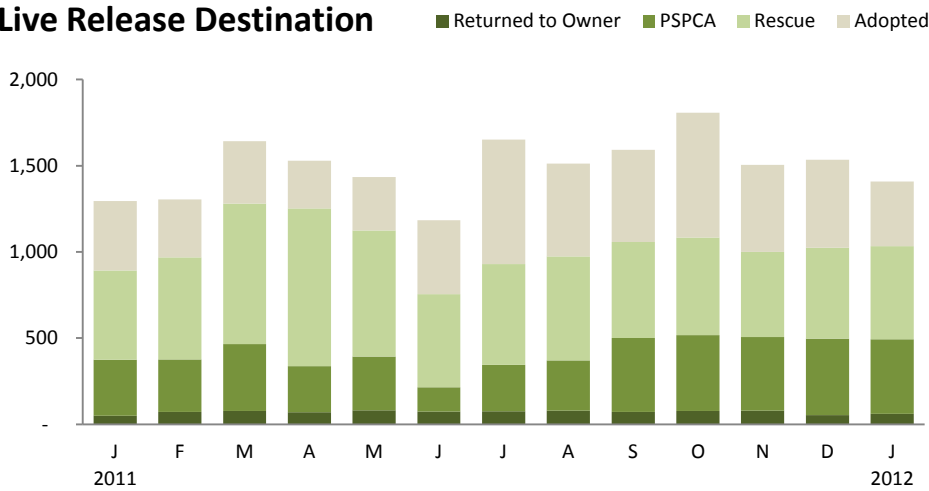
Live Release Rate, as dictated by the Asilomar Accords, the industry standard (see: asilomaraccords.org), is calculated by dividing Total Live Release (adoptions, outgoing transfers, and return to owner) by Total Outcomes. Additional data is available on the attached spreadsheet.

ACCT's Live Release Rate includes data on the disposition of animals transferred to PSPCA Headquarters.

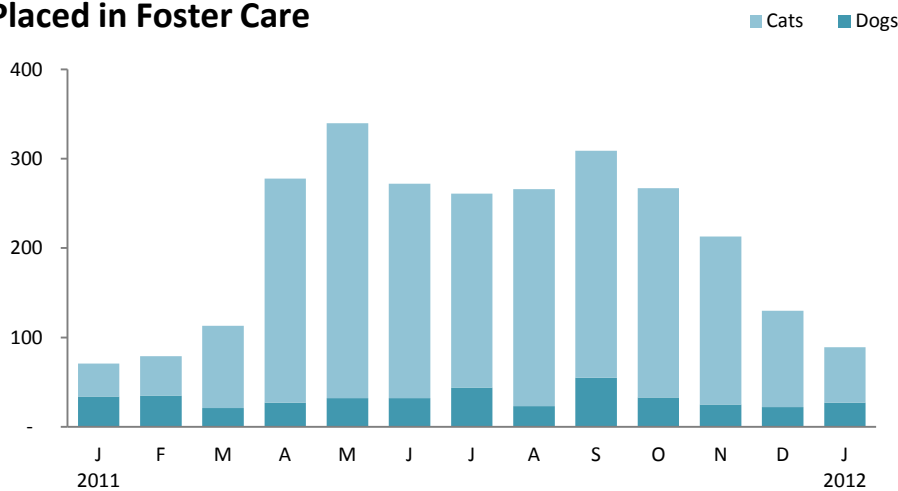
Source of Intake



Live Release Destination



Placed in Foster Care



The **ACCT Foster Care Program** is one of the many life saving arms of the PSPCA. The primary reason for foster care is to provide a temporary home for a potentially adoptable animal whose current condition is not manageable in a shelter setting and to alleviate overcrowding. ACCT receives more animals than there is space, and so moving animals into foster homes not only saves them, but also ensures that newly arriving animals have cage space.