

PSPCA Animal Care and Control Team
Monthly Animal Intake and Disposition Statistics
FEBRUARY 2012

INTAKE

Animal Intake	<i>Dogs</i>	<i>Cats</i>	<i>Other</i>	<i>Total</i>	<i>Total</i>
				<i>Dog & Cat</i>	<i>All</i>
Total Live Intake	786	967	107	1,753	1,860
Owner Surrendered	339	339	20	678	698
Returned Adoption	25	24	-	49	49
Stray	421	604	86	1,025	1,111
Transferred In	1	-	1	1	2
DOA Intake	75	80	16	155	171

SHELTER ANIMAL COUNT

Beginning Shelter Count	<i>Dogs</i>	<i>Cats</i>	<i>Other</i>	<i>Total</i>	<i>Total</i>
				<i>Dog & Cat</i>	<i>All</i>
in Kennel	160	85	4	245	249
in Foster Care	103	635	1	738	739
Ending Shelter Count	253	714	5	967	972
in Kennel	158	110	3	268	271
in Foster Care	95	604	2	699	701

OUTCOME

Live Release	<i>Dogs</i>	<i>Cats</i>	<i>Other</i>	<i>Total</i>	<i>Total</i>
				<i>Dog & Cat</i>	<i>All</i>
Total Live Release	535	858	60	1,393	1,453
Adopted	112	211	3	323	326
Returned to Owner	75	6	4	81	85
Transferred to Rescue	263	341	47	604	651
Transferred to PSPCA*	85	300	6	385	391

* Includes animals transferred for adoptions, medical care and cruelty investigations

Euthanasia

Total Euthanized	256	105	46	361	407
------------------	------------	------------	-----------	------------	------------

Died or Lost in Shelter/Care

Total Died/Lost	80	90	17	170	187
Died in Kennel	5	2	1	7	8
Died in Foster	-	8	-	8	8
Missing	-	-	-	-	-
DOA	75	80	16	155	171

PSPCA Animal Care and Control Team
Monthly Animal Intake and Disposition Statistics
FEBRUARY 2012

OUTCOMES OF PSPCA TRANSFERS

Of animals transferred to PSPCA Headquarters, the following outcomes were reported:

	<i>Dogs</i>	<i>Cats</i>	<i>Other</i>	<i>Total Dog & Cat</i>	<i>Total All</i>
Adopted	59	233	2	292	294
Returned to Owner	1	-	-	1	1
Transferred to Rescue	2	-	-	2	2
Euthanized	1	1	-	2	2
Died in Kennel	-	1	-	1	1
Missing	-	-	-	-	-
in Kennel	22	65	4	87	91

LIVE RELEASE RATE

Live Release Rate, as dictated by the Asilomar Accords, is calculated by dividing Total Live Release (adoptions, outgoing transfers and return to owner/guardian) by the sum of Total Live Release and Total Euthanasia. Because Administrative Transfers represent database maintenance and not actual live releases, they are not included in Total Live Release. Additionally, in order to accurately represent the outcomes of animals in ACCT's care, those that were transferred to PSPCA Headquarters but were ultimately euthanized have been deducted from the ACCT Live Release Total and added to Euthanasia Total in the calculation.

The Live Release Rate does not include 16 animals that died or were lost in the shelter/care, 171 animals that were dead on arrival, or 0 administrative transfers.

	<i>Dogs</i>	<i>Cats</i>	<i>Other</i>	<i>Total Dog & Cat</i>	<i>Total All</i>
Live Release Rate	68%	89%	57%	79%	78%

FOSTER CARE PROGRAM

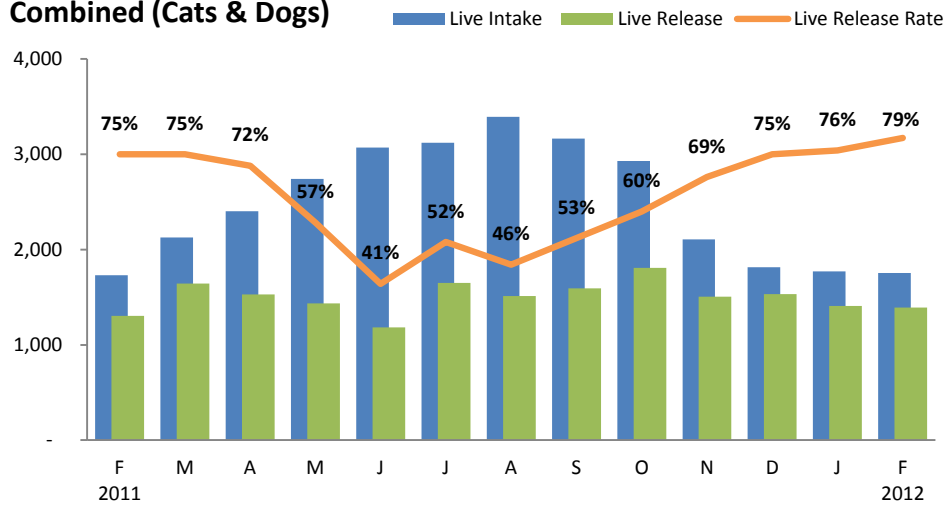
The ACCT Foster Program is one of the many life saving arms of the PSPCA. The primary reason for foster care is to provide a temporary home for a potentially adoptable animal whose current condition is not manageable in a shelter setting and to alleviate overcrowding. ACCT receives more animals than there is space, and so moving animals into foster homes not only saves them, but also ensures that newly arriving animals have cage space.

	<i>Dogs</i>	<i>Cats</i>	<i>Other</i>	<i>Total Dog & Cat</i>	<i>Total All</i>
Placed in Foster this Month	23	71	1	94	95

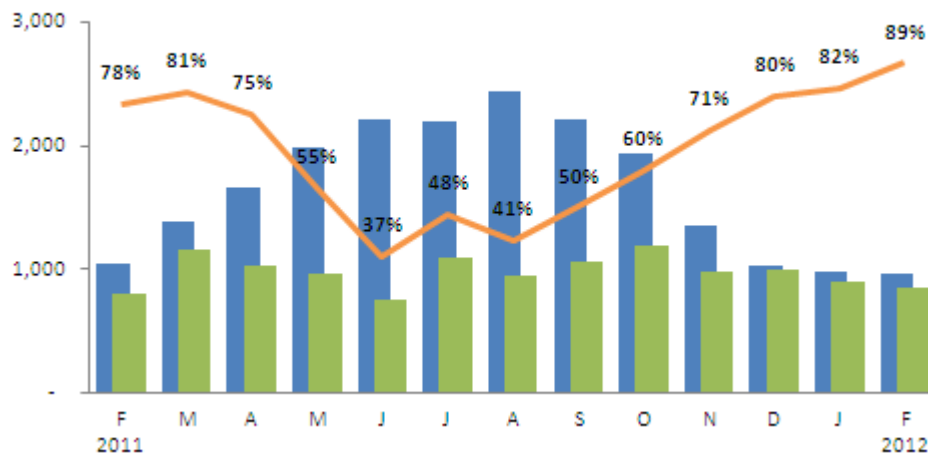
ACCT Animal Intakes and Outcomes

Intake and Live Release

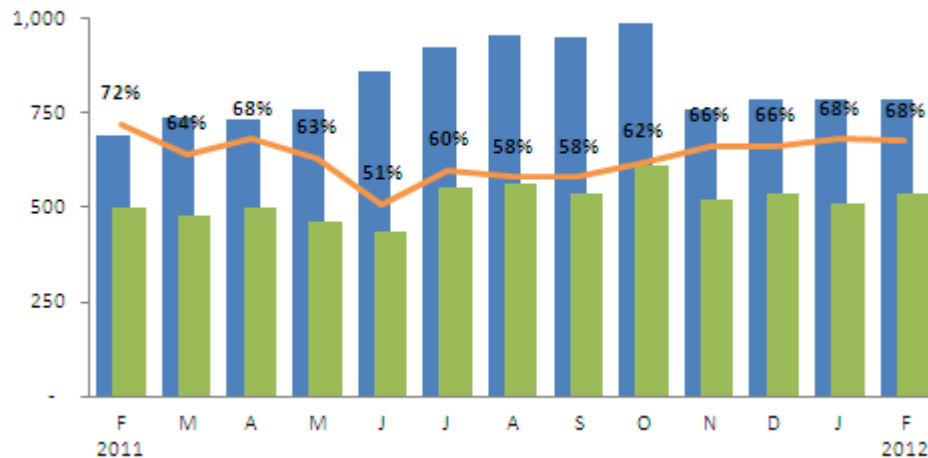
Combined (Cats & Dogs)



Cats



Dogs



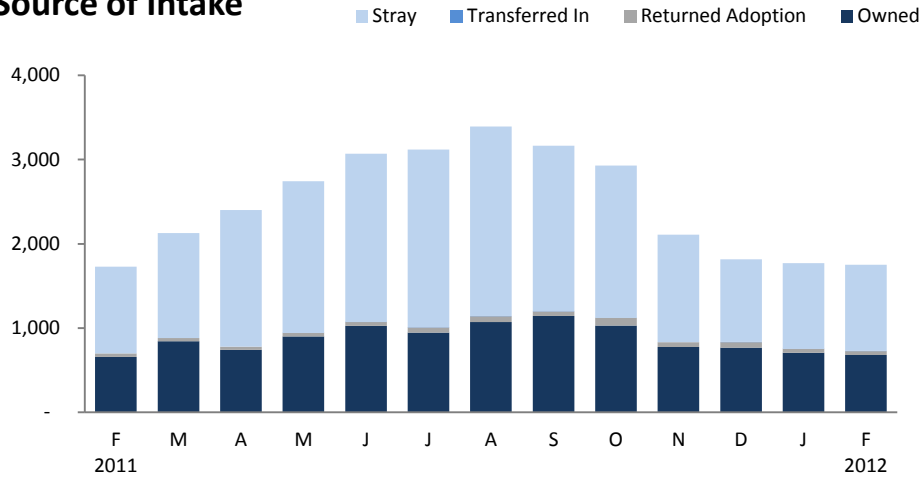
NOTES:

ACCT Animal Intakes and Outcomes includes only cats and dogs. For data including other animals (small mammals, exotics, wildlife, etc.) please see the attached spreadsheet.

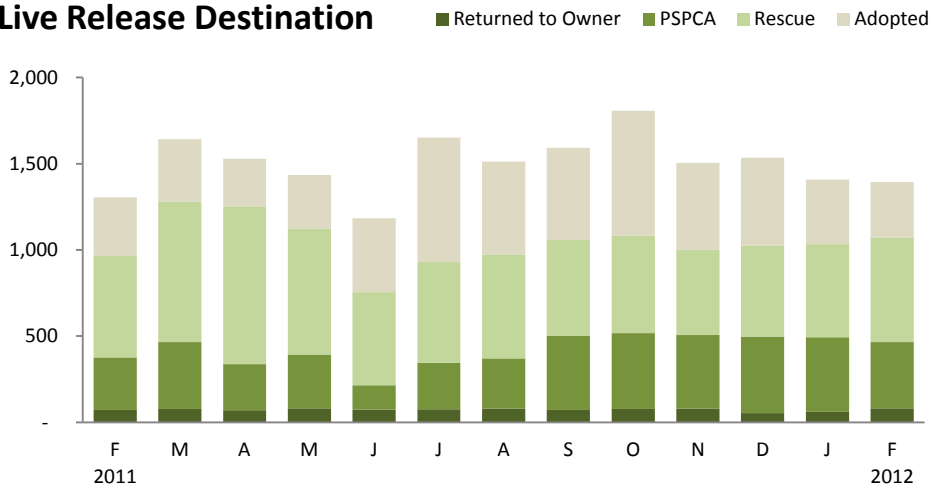
Live Release Rate, as dictated by the Asilomar Accords, the industry standard (see: asilomaraccords.org), is calculated by dividing Total Live Release (adoptions, outgoing transfers, and return to owner) by Total Outcomes. Additional data is available on the attached spreadsheet.

ACCT's Live Release Rate includes data on the disposition of animals transferred to PSPCA Headquarters.

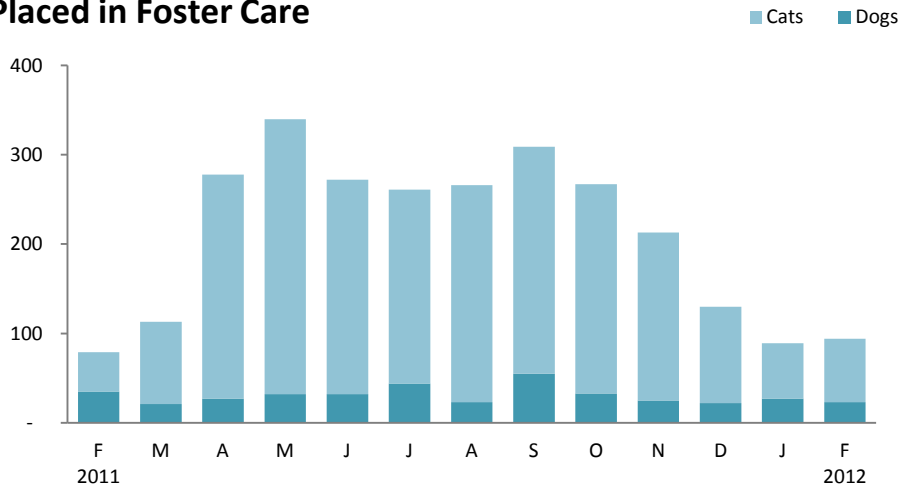
Source of Intake



Live Release Destination



Placed in Foster Care



The **ACCT Foster Care Program** is one of the many life saving arms of the PSPCA. The primary reason for foster care is to provide a temporary home for a potentially adoptable animal whose current condition is not manageable in a shelter setting and to alleviate overcrowding. ACCT receives more animals than there is space, and so moving animals into foster homes not only saves them, but also ensures that newly arriving animals have cage space.