

PSPCA Animal Care and Control Team
Monthly Animal Intake and Disposition Statistics
MARCH 2012

INTAKE

Animal Intake	<i>Dogs</i>	<i>Cats</i>	<i>Other</i>	<i>Total</i>	<i>Total</i>
				<i>Dog & Cat</i>	<i>All</i>
Total Live Intake	817	1,306	123	2,123	2,246
Owner Surrendered	401	438	30	839	869
Returned Adoption	13	30	-	43	43
Stray	402	835	90	1,237	1,327
Transferred In	1	3	3	4	7
DOA Intake	83	101	27	184	211

SHELTER ANIMAL COUNT

Beginning Shelter Count	<i>Dogs</i>	<i>Cats</i>	<i>Other</i>	<i>Total</i>	<i>Total</i>
				<i>Dog & Cat</i>	<i>All</i>
in Kennel	158	110	3	268	271
in Foster Care	95	605	2	700	702
Ending Shelter Count	235	772	20	1,007	1,027
in Kennel	150	200	18	350	368
in Foster Care	85	572	2	657	659

OUTCOME

Live Release	<i>Dogs</i>	<i>Cats</i>	<i>Other</i>	<i>Total</i>	<i>Total</i>
				<i>Dog & Cat</i>	<i>All</i>
Total Live Release	554	1,060	67	1,614	1,681
Adopted	127	286	8	413	421
Returned to Owner	62	14	-	76	76
Transferred to Rescue	260	477	54	737	791
Transferred to PSPCA*	105	283	5	388	393

* Includes animals transferred for adoptions, medical care and cruelty investigations

Euthanasia

Total Euthanized	278	171	40	449	489
------------------	------------	------------	-----------	------------	------------

Died or Lost in Shelter/Care

Total Died/Lost	86	119	28	205	233
Died in Kennel	2	5	1	7	8
Died in Foster	-	11	-	11	11
Missing	1	2	-	3	3
DOA	83	101	27	184	211

PSPCA Animal Care and Control Team
Monthly Animal Intake and Disposition Statistics
MARCH 2012

OUTCOMES OF PSPCA TRANSFERS

Of animals transferred to PSPCA Headquarters, the following outcomes were reported:

	<i>Dogs</i>	<i>Cats</i>	<i>Other</i>	<i>Total Dog & Cat</i>	<i>Total All</i>
Adopted	56	197	2	253	255
Returned to Owner	-	-	-	-	-
Transferred to Rescue	13	-	3	13	16
Euthanized	1	3	-	4	4
Died in Kennel	-	1	-	1	1
Missing	-	-	-	-	-
in Kennel	35	82	-	117	117

LIVE RELEASE RATE

Live Release Rate, as dictated by the Asilomar Accords, is calculated by dividing Total Live Release (adoptions, outgoing transfers and return to owner/guardian) by the sum of Total Live Release and Total Euthanasia. Because Administrative Transfers represent database maintenance and not actual live releases, they are not included in Total Live Release. Additionally, in order to accurately represent the outcomes of animals in ACCT's care, those that were transferred to PSPCA Headquarters but were ultimately euthanized have been deducted from the ACCT Live Release Total and added to Euthanasia Total in the calculation.

The Live Release Rate does not include 22 animals that died or were lost in the shelter/care, 211 animals that were dead on arrival, or 0 administrative transfers.

	<i>Dogs</i>	<i>Cats</i>	<i>Other</i>	<i>Total Dog & Cat</i>	<i>Total All</i>
Live Release Rate	66%	86%	63%	78%	77%

FOSTER CARE PROGRAM

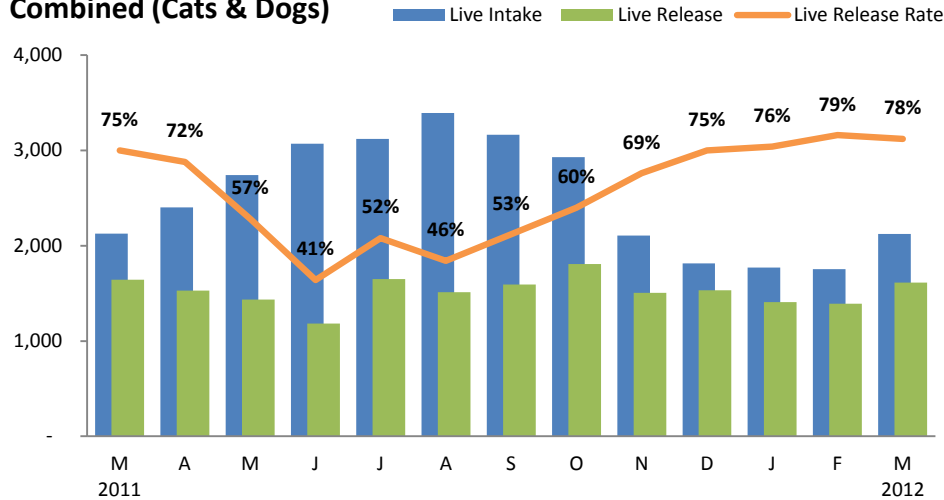
The ACCT Foster Program is one of the many life saving arms of the PSPCA. The primary reason for foster care is to provide a temporary home for a potentially adoptable animal whose current condition is not manageable in a shelter setting and to alleviate overcrowding. ACCT receives more animals than there is space, and so moving animals into foster homes not only saves them, but also ensures that newly arriving animals have cage space.

	<i>Dogs</i>	<i>Cats</i>	<i>Other</i>	<i>Total Dog & Cat</i>	<i>Total All</i>
Placed in Foster this Month	31	127	-	158	158

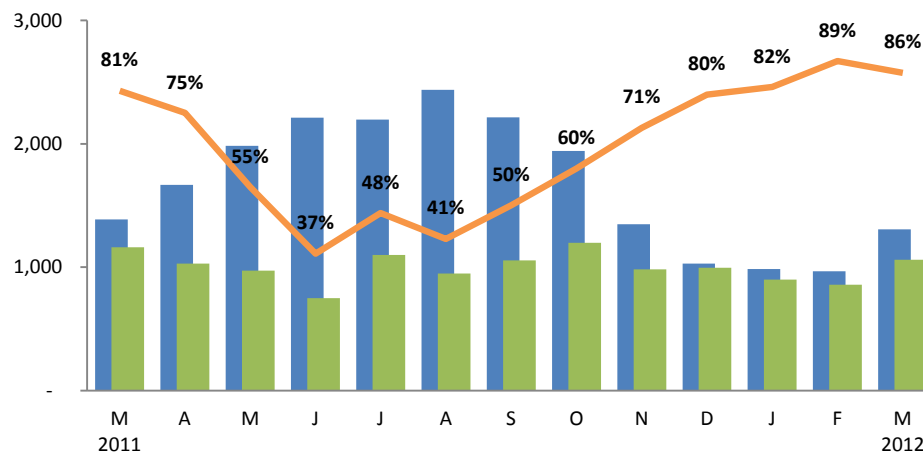
ACCT Animal Intakes and Outcomes

Intake and Live Release

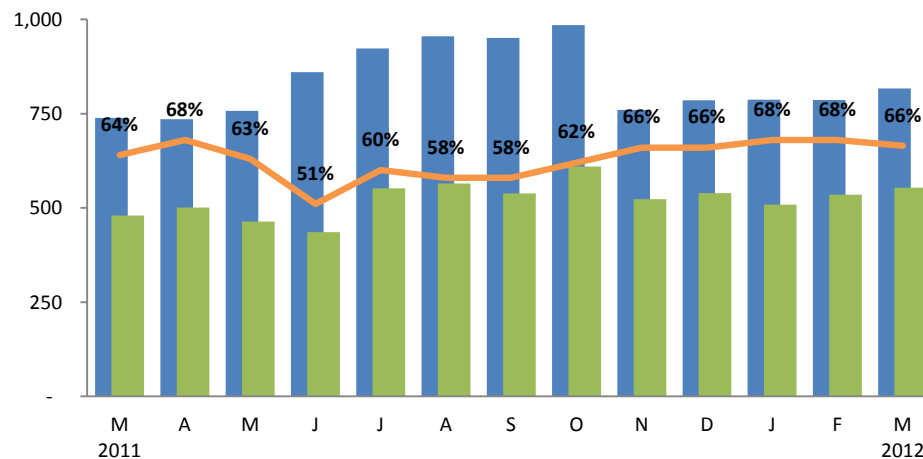
Combined (Cats & Dogs)



Cats



Dogs



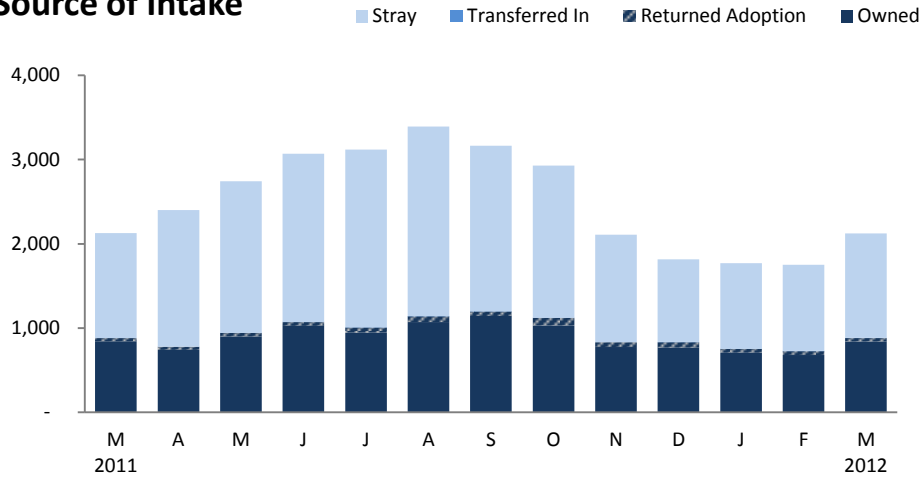
NOTES:

ACCT Animal Intakes and Outcomes includes only cats and dogs. For data including other animals (small mammals, exotics, wildlife, etc.) please see the attached spreadsheet.

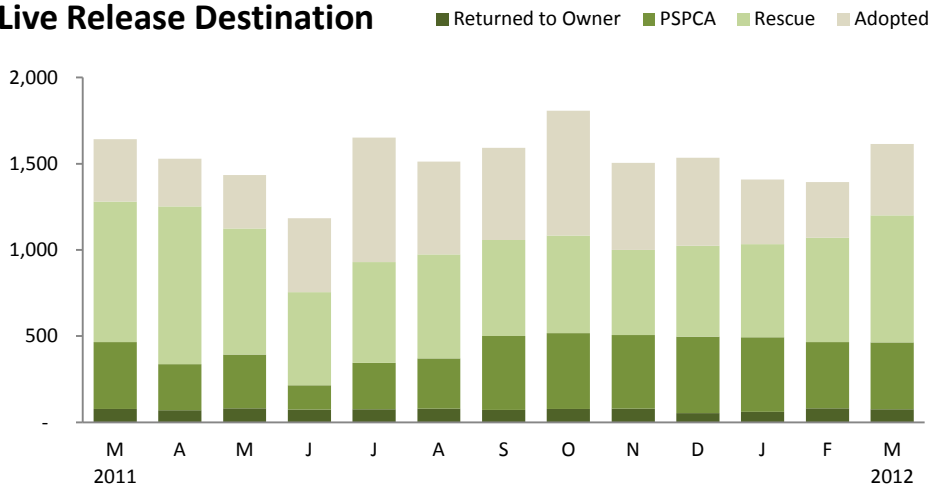
Live Release Rate, as dictated by the Asilomar Accords, the industry standard (see: asilomaraccords.org), is calculated by dividing Total Live Release (adoptions, outgoing transfers, and return to owner) by Total Outcomes. Additional data is available on the attached spreadsheet.

ACCT's Live Release Rate includes data on the disposition of animals transferred to PSPCA Headquarters.

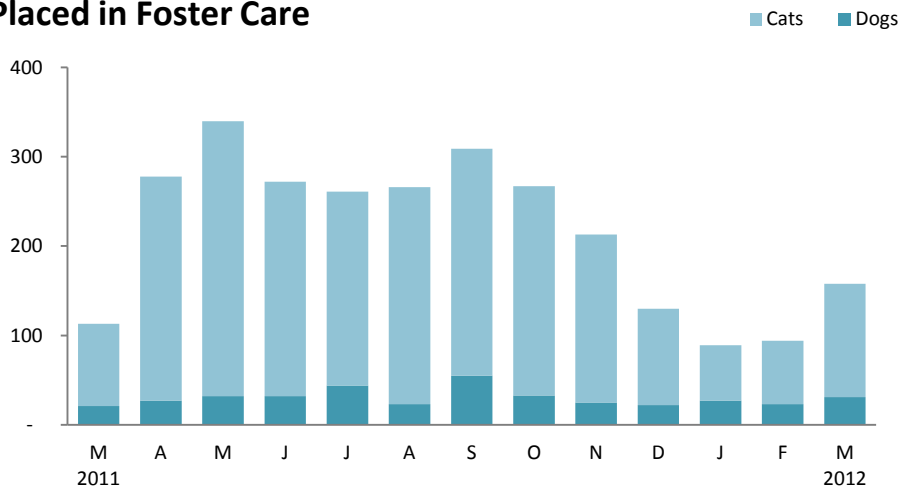
Source of Intake



Live Release Destination



Placed in Foster Care



The **ACCT Foster Care Program** is one of the many life saving arms of the PSPCA. The primary reason for foster care is to provide a temporary home for a potentially adoptable animal whose current condition is not manageable in a shelter setting and to alleviate overcrowding. ACCT receives more animals than there is space, and so moving animals into foster homes not only saves them, but also ensures that newly arriving animals have cage space.