

Animal Care Report

April 2012

| ALL ANIMALS | Jan | Feb | Mar | Apr | May | Jun | Jul | Aug | Sept | Oct | Nov | Dec | YTD |
|-------------------------------|--------------|--------------|--------------|--------------|------------|------------|------------|------------|-------------|------------|------------|------------|--------------|
| Live Release Rate * | 76% | 78% | 77% | 73% | | | | | | | | | 76% |
| Intake | 1,847 | 1,860 | 2,246 | 2,618 | | | | | | | | | 8,571 |
| Stray | 1,081 | 1,111 | 1,327 | 1,820 | | | | | | | | | 5,339 |
| Owner Surrendered | 719 | 698 | 869 | 750 | | | | | | | | | 3,036 |
| Returned Adoption | 45 | 49 | 43 | 48 | | | | | | | | | 185 |
| Transferred In | 2 | 2 | 7 | - | | | | | | | | | 11 |
| Live Release | 1,452 | 1,453 | 1,681 | 1,644 | | | | | | | | | 6,230 |
| Adopted | 376 | 326 | 421 | 332 | | | | | | | | | 1,455 |
| Returned to Owner | 60 | 85 | 76 | 87 | | | | | | | | | 308 |
| Transferred to Rescue | 1,016 | 1,042 | 1,184 | 1,225 | | | | | | | | | 4,467 |
| Euthanized | 469 | 407 | 489 | 601 | | | | | | | | | 1,966 |
| Died/Lost in Care | 34 | 16 | 22 | 37 | | | | | | | | | 109 |
| Died | 26 | 16 | 19 | 28 | | | | | | | | | 89 |
| Missing | 8 | - | 3 | 9 | | | | | | | | | 20 |
| Month End Animal Count | 987 | 972 | 1,027 | 1,362 | | | | | | | | | n/a |
| Fostered | 89 | 95 | 158 | 389 | | | | | | | | | 731 |
| Spayed/Neutered | 486 | 502 | 602 | 457 | | | | | | | | | 2,047 |

| DOGS | Jan | Feb | Mar | Apr | May | Jun | Jul | Aug | Sept | Oct | Nov | Dec | YTD |
|-------------------------------|------------|------------|------------|------------|------------|------------|------------|------------|-------------|------------|------------|------------|--------------|
| Live Release Rate * | 68% | 68% | 66% | 66% | | | | | | | | | 67% |
| Intake | 787 | 786 | 817 | 758 | | | | | | | | | 3,148 |
| Stray | 414 | 421 | 402 | 382 | | | | | | | | | 1,619 |
| Owner Surrendered | 350 | 339 | 401 | 360 | | | | | | | | | 1,450 |
| Returned Adoption | 23 | 25 | 13 | 16 | | | | | | | | | 77 |
| Transferred In | - | 1 | 1 | - | | | | | | | | | 2 |
| Live Release | 509 | 535 | 554 | 494 | | | | | | | | | 2,092 |
| Adopted | 107 | 112 | 127 | 104 | | | | | | | | | 450 |
| Returned to Owner | 53 | 75 | 62 | 80 | | | | | | | | | 270 |
| Transferred to Rescue | 349 | 348 | 365 | 310 | | | | | | | | | 1,372 |
| Euthanized | 242 | 256 | 278 | 260 | | | | | | | | | 1,036 |
| Died/Lost in Care | 6 | 5 | 3 | 4 | | | | | | | | | 18 |
| Died | 4 | 5 | 2 | 2 | | | | | | | | | 13 |
| Missing | 2 | - | 1 | 2 | | | | | | | | | 5 |
| Month End Animal Count | 263 | 253 | 235 | 235 | | | | | | | | | n/a |
| Fostered | 27 | 23 | 31 | 31 | | | | | | | | | 112 |
| Spayed/Neutered | 141 | 154 | 160 | 137 | | | | | | | | | 592 |

* Live Release Rate = Live Release / (Live Release + Euthanized); see asilomaraccords.org for further information.
The Live Release Rate does not include animals that died or were lost in care, or animals that were dead on arrival.

Animal Care Report

April 2012

| CATS | Jan | Feb | Mar | Apr | May | Jun | Jul | Aug | Sept | Oct | Nov | Dec | YTD |
|------------------------|-----|-----|-------|-------|-----|-----|-----|-----|------|-----|-----|-----|-------|
| Live Release Rate * | 82% | 89% | 86% | 79% | | | | | | | | | 84% |
| Intake | 985 | 967 | 1,306 | 1,697 | | | | | | | | | 4,955 |
| Stray | 603 | 604 | 835 | 1,291 | | | | | | | | | 3,333 |
| Owner Surrendered | 358 | 339 | 438 | 374 | | | | | | | | | 1,509 |
| Returned Adoption | 22 | 24 | 30 | 32 | | | | | | | | | 108 |
| Transferred In | 2 | - | 3 | - | | | | | | | | | 5 |
| Live Release | 899 | 858 | 1,060 | 1,043 | | | | | | | | | 3,860 |
| Adopted | 267 | 211 | 286 | 227 | | | | | | | | | 991 |
| Returned to Owner | 7 | 6 | 14 | 7 | | | | | | | | | 34 |
| Transferred to Rescue | 625 | 641 | 760 | 809 | | | | | | | | | 2,835 |
| Euthanized | 197 | 105 | 171 | 285 | | | | | | | | | 758 |
| Died/Lost in Care | 28 | 10 | 18 | 24 | | | | | | | | | 80 |
| Died | 22 | 10 | 16 | 23 | | | | | | | | | 71 |
| Missing | 6 | - | 2 | 1 | | | | | | | | | 9 |
| Month End Animal Count | 719 | 714 | 772 | 1,116 | | | | | | | | | 3,321 |
| Fostered | 62 | 71 | 127 | 357 | | | | | | | | | 617 |
| Spayed/Neutered | 342 | 343 | 440 | 318 | | | | | | | | | 1,443 |

| SMALL ANIMALS AND WILDLIFE | Jan | Feb | Mar | Apr | May | Jun | Jul | Aug | Sept | Oct | Nov | Dec | YTD |
|-----------------------------------|-----|-----|-----|-----|-----|-----|-----|-----|------|-----|-----|-----|-----|
| Live Release Rate * | 60% | 57% | 63% | 66% | | | | | | | | | 62% |
| Intake | 75 | 107 | 123 | 163 | | | | | | | | | 468 |
| Stray | 64 | 86 | 90 | 147 | | | | | | | | | 387 |
| Owner Surrendered | 11 | 20 | 30 | 16 | | | | | | | | | 77 |
| Returned Adoption | - | - | - | - | | | | | | | | | - |
| Transferred In | - | 1 | 3 | - | | | | | | | | | 4 |
| Live Release | 44 | 60 | 67 | 107 | | | | | | | | | 278 |
| Adopted | 2 | 3 | 8 | 1 | | | | | | | | | 14 |
| Returned to Owner | - | 4 | - | - | | | | | | | | | 4 |
| Transferred to Rescue | 42 | 53 | 59 | 106 | | | | | | | | | 260 |
| Euthanized | 30 | 46 | 40 | 56 | | | | | | | | | 172 |
| Died/Lost in Care | - | 1 | 1 | 9 | | | | | | | | | 11 |
| Died | - | 1 | 1 | 3 | | | | | | | | | 5 |
| Missing | - | - | - | 6 | | | | | | | | | 6 |
| Month End Animal Count | 5 | 5 | 20 | 11 | | | | | | | | | 41 |
| Fostered | - | 1 | - | 1 | | | | | | | | | 2 |
| Spayed/Neutered | 3 | 5 | 2 | 2 | | | | | | | | | 12 |

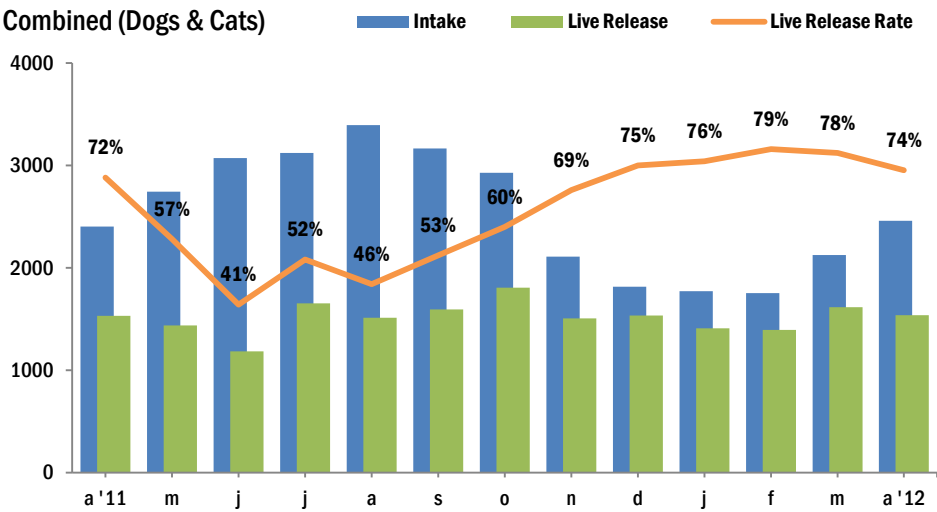
* Live Release Rate = Live Release / (Live Release + Euthanized); see asilomaraccords.org for further information.
The Live Release Rate does not include animals that died or were lost in care, or animals that were dead on arrival.

Animal Care Report

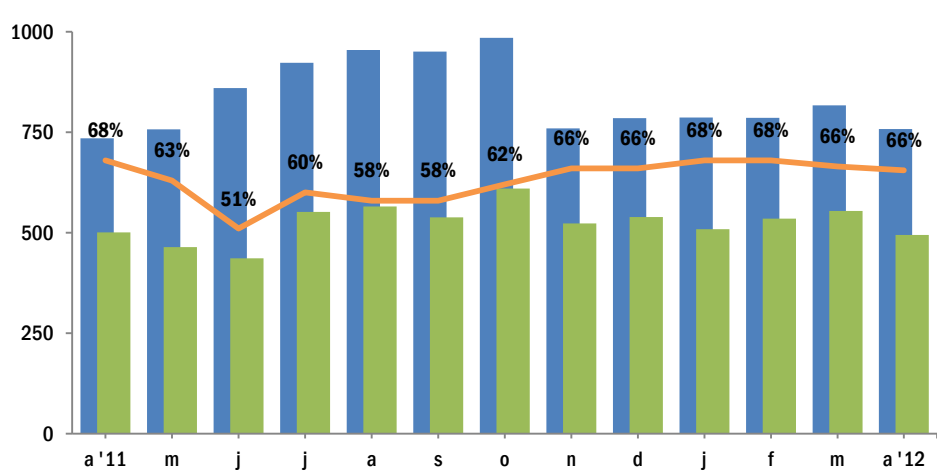
April 2012

Intake & Live Release

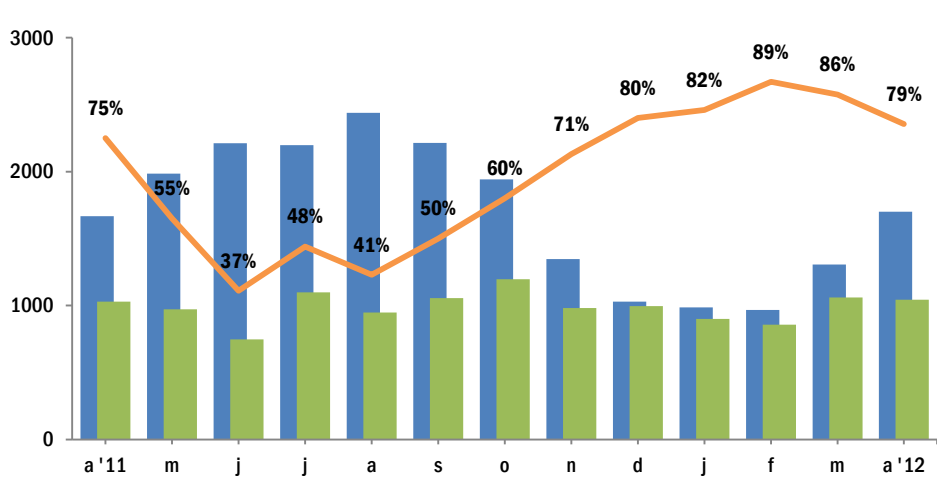
Combined (Dogs & Cats)



Dogs



Cats



NOTES:

Live Release Rate, as dictated by the Asilomar Accords, the industry standard (see: asilomaraccords.org), is calculated by dividing Total Live Release (adoptions, outgoing transfers, and returns to owner) by Total Outcomes (adoptions, outgoing transfers, returns to owner, and euthanasias).

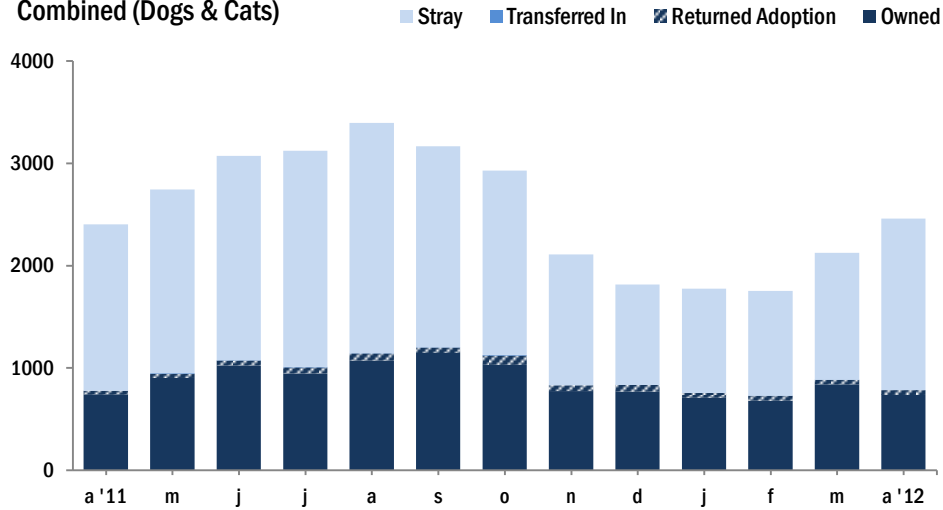
The Live Release Rate does not include animals that died or were lost in care, animals that were dead on arrival, or administrative transfers.

Animal Care Report

April 2012

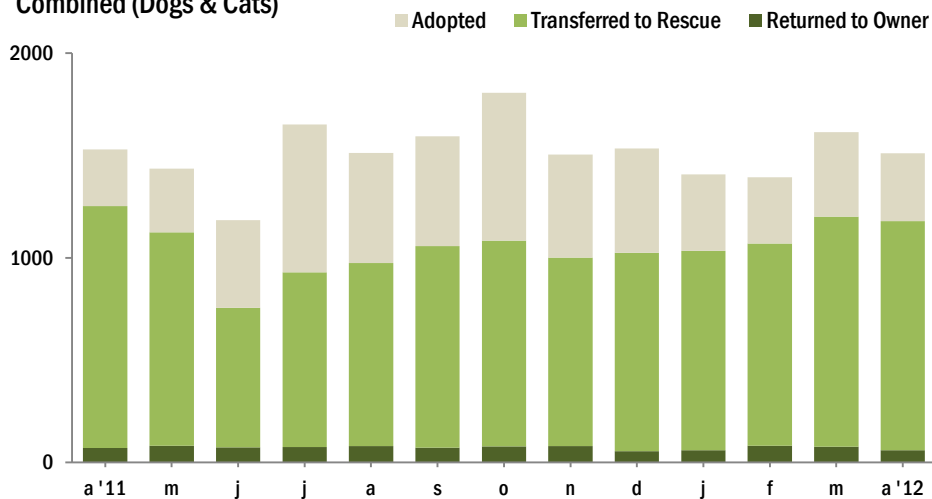
Source of Intake

Combined (Dogs & Cats)



Live Releases

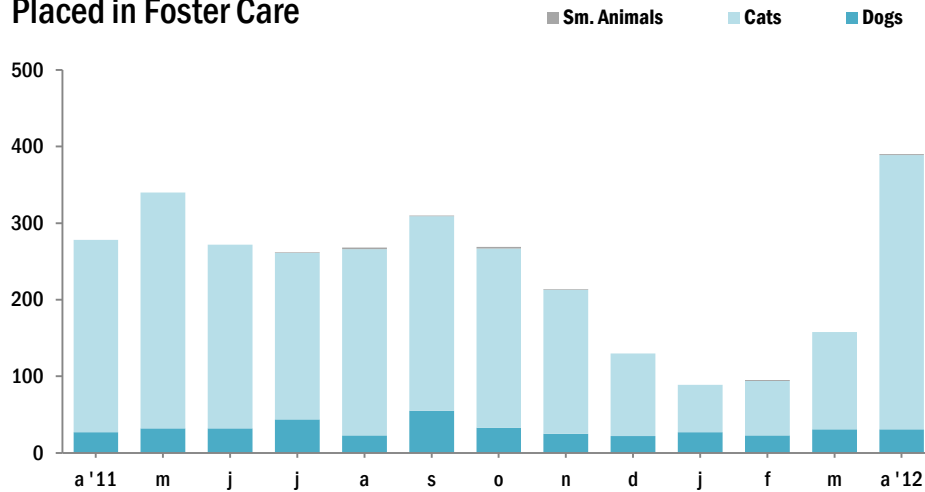
Combined (Dogs & Cats)



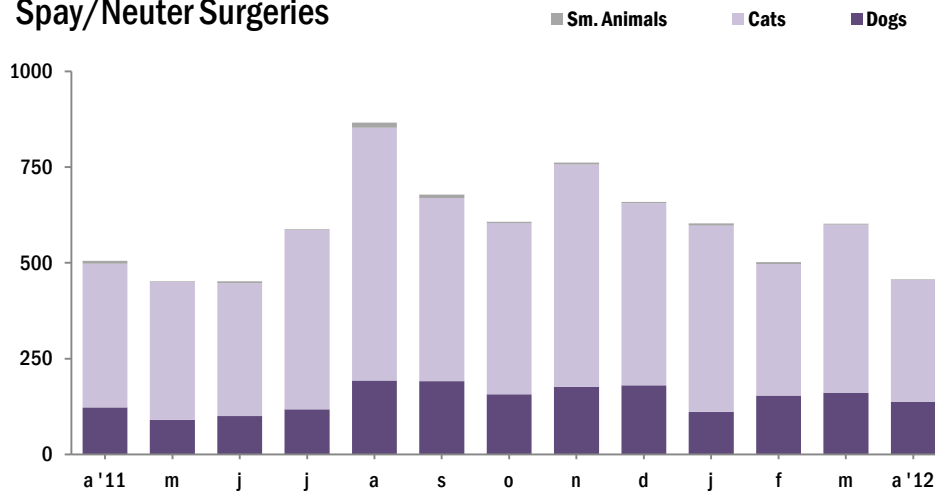
Animal Care Report

April 2012

Placed in Foster Care



Spay/Neuter Surgeries



The Foster Care Program is one of the many life saving arms of ACCT Philly. The primary reason for foster care is to provide a temporary home for a potentially adoptable animal whose current condition is not manageable in a shelter setting and to alleviate overcrowding. ACCT Philly receives more animals than there is space, and so moving animals into foster homes not only saves them, but also ensures that newly arriving animals have cage space.