

<b>ALL ANIMALS</b>													
	Jan	Feb	Mar	Apr	May	Jun	Jul	Aug	Sept	Oct	Nov	Dec	YTD
<b>Live Release Rate</b>	76%	78%	77%	73%	58%	51%	50%	50%	55%	65%	70%		61%
<b>Intake</b>	1,847	1,860	2,246	2,618	2,921	3,389	3,534	3,839	3,201	2,859	2,115		30,429
Stray	1,081	1,111	1,327	1,820	2,026	2,384	2,554	2,650	2,155	1,893	1,358		20,359
Owner Surrendered	719	698	869	750	843	955	901	1,100	986	882	676		9,379
Returned Adoption	45	49	43	48	52	50	77	89	59	81	75		668
Transferred In	2	2	7	-	-	-	2	-	1	3	6		23
<b>Live Release</b>	1,452	1,453	1,681	1,644	1,534	1,667	1,678	1,944	1,783	1,827	1,529		18,192
Adopted	376	326	421	332	421	546	650	670	676	685	690		5,793
Returned to Owner	60	85	76	87	76	62	87	75	79	76	88		851
Transferred to Rescue	1,016	1,042	1,184	1,225	1,037	1,059	941	1,199	1,028	1,066	751		11,548
<b>Euthanized</b>	469	407	489	601	1,118	1,621	1,704	1,920	1,456	976	666		11,427
<b>Died/Lost in Care</b>	34	16	22	37	76	67	104	76	50	68	68		618
Died	26	16	19	28	63	60	81	68	42	49	59		511
Missing	8	-	3	9	13	7	23	8	8	19	9		107
<b>Month End Animal Count</b>	987	972	1,027	1,362	1,556	1,596	1,644	1,545	1,459	1,448	1,300		n/a
<b>Fostered</b>	89	95	158	389	383	333	391	343	254	261	230		2,926
<b>Spayed/Neutered</b>	486	502	602	457	618	725	863	687	769	802	818		7,329

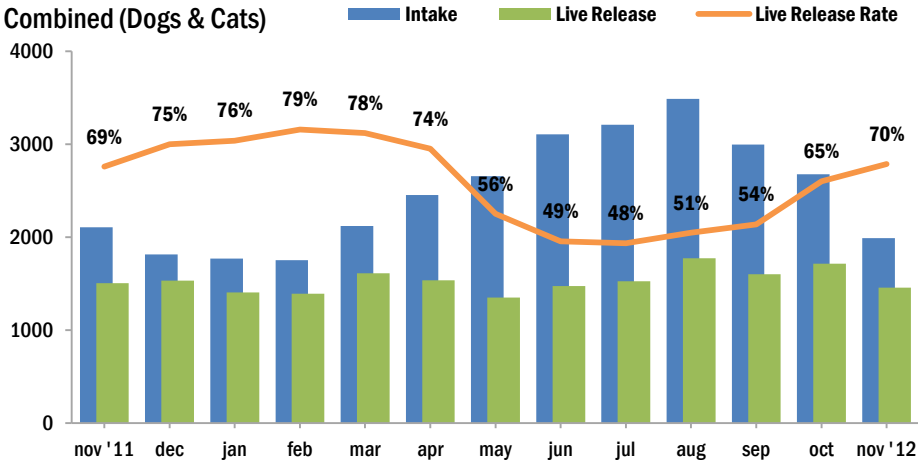
<b>DOGS</b>													
	Jan	Feb	Mar	Apr	May	Jun	Jul	Aug	Sept	Oct	Nov	Dec	YTD
<b>Live Release Rate</b>	68%	68%	66%	66%	62%	59%	62%	58%	57%	64%	67%		63%
<b>Intake</b>	787	786	817	758	761	846	901	975	949	941	781		9,302
Stray	414	421	402	382	357	443	493	520	528	520	426		4,906
Owner Surrendered	350	339	401	360	381	377	369	418	403	388	317		4,103
Returned Adoption	23	25	13	16	23	26	37	37	17	32	34		283
Transferred In	-	1	1	-	-	-	2	-	1	1	4		10
<b>Live Release</b>	509	535	554	494	458	502	561	580	534	590	538		5,855
Adopted	107	112	127	104	133	120	164	161	122	135	144		1,429
Returned to Owner	53	75	62	80	60	52	83	61	67	71	70		734
Transferred to Rescue	349	348	365	310	265	330	314	358	345	384	324		3,692
<b>Euthanized</b>	242	256	278	260	278	352	342	413	395	326	264		3,406
<b>Died/Lost in Care</b>	6	5	3	4	4	3	8	7	5	7	3		55
Died	4	5	2	2	3	3	8	7	4	4	3		45
Missing	2	-	1	2	1	-	-	-	1	3	-		10
<b>Month End Animal Count</b>	263	253	235	235	255	248	238	213	229	247	223		n/a
<b>Fostered</b>	27	23	31	31	37	34	30	24	43	47	37		364
<b>Spayed/Neutered</b>	141	154	160	137	156	128	168	167	182	213	201		1,807

Live Release Rate = Live Release / (Live Release + Euthanized); see <http://www.AsilomarAccords.org> for further information.  
The Live Release Rate does not include animals that died or were lost in care, or animals that were dead on arrival.

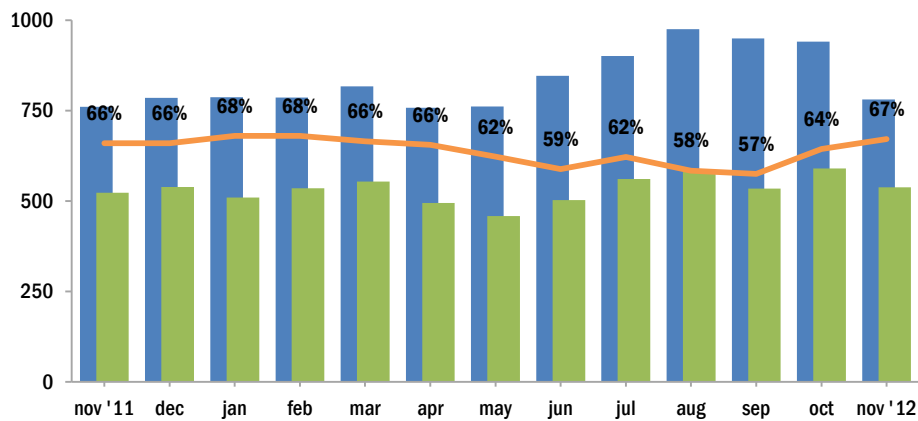
<b>CATS</b>													
	Jan	Feb	Mar	Apr	May	Jun	Jul	Aug	Sept	Oct	Nov	Dec	YTD
Live Release Rate	82%	89%	86%	79%	54%	45%	43%	48%	52%	65%	71%		60%
<b>Intake</b>	<b>985</b>	<b>967</b>	<b>1,306</b>	<b>1,697</b>	<b>1,898</b>	<b>2,263</b>	<b>2,310</b>	<b>2,514</b>	<b>2,050</b>	<b>1,736</b>	<b>1,211</b>		<b>18,937</b>
Stray	603	604	835	1,291	1,429	1,681	1,756	1,826	1,450	1,227	827		13,529
Owner Surrendered	358	339	438	374	440	558	514	636	558	459	341		5,015
Returned Adoption	22	24	30	32	29	24	40	52	42	48	41		384
Transferred In	2	-	3	-	-	-	-	-	-	2	2		9
<b>Live Release</b>	<b>899</b>	<b>858</b>	<b>1,060</b>	<b>1,043</b>	<b>893</b>	<b>975</b>	<b>965</b>	<b>1,193</b>	<b>1,069</b>	<b>1,126</b>	<b>919</b>		<b>11,000</b>
Adopted	267	211	286	227	283	421	484	503	552	548	541		4,323
Returned to Owner	7	6	14	7	16	10	2	14	10	5	17		108
Transferred to Rescue	625	641	760	809	594	544	479	676	507	573	361		6,569
<b>Euthanized</b>	<b>197</b>	<b>105</b>	<b>171</b>	<b>285</b>	<b>769</b>	<b>1,191</b>	<b>1,285</b>	<b>1,273</b>	<b>998</b>	<b>596</b>	<b>368</b>		<b>7,238</b>
<b>Died/Lost in Care</b>	<b>28</b>	<b>10</b>	<b>18</b>	<b>24</b>	<b>66</b>	<b>59</b>	<b>91</b>	<b>66</b>	<b>42</b>	<b>49</b>	<b>64</b>		<b>517</b>
Died	22	10	16	23	57	53	69	58	35	40	55		438
Missing	6	-	2	1	9	6	22	8	7	9	9		79
<b>Month End Animal Count</b>	<b>719</b>	<b>714</b>	<b>772</b>	<b>1,116</b>	<b>1,289</b>	<b>1,329</b>	<b>1,298</b>	<b>1,280</b>	<b>1,222</b>	<b>1,188</b>	<b>1,048</b>		<b>n/a</b>
<b>Fostered</b>	<b>62</b>	<b>71</b>	<b>127</b>	<b>357</b>	<b>346</b>	<b>298</b>	<b>360</b>	<b>319</b>	<b>209</b>	<b>213</b>	<b>193</b>		<b>2,555</b>
<b>Spayed/Neutered</b>	<b>342</b>	<b>343</b>	<b>440</b>	<b>318</b>	<b>461</b>	<b>597</b>	<b>695</b>	<b>520</b>	<b>587</b>	<b>589</b>	<b>617</b>		<b>5,509</b>

<b>SMALL ANIMALS AND WILDLIFE</b>													
	Jan	Feb	Mar	Apr	May	Jun	Jul	Aug	Sept	Oct	Nov	Dec	YTD
Live Release Rate	60%	57%	63%	66%	72%	71%	66%	42%	74%	67%	68%		63%
<b>Intake</b>	<b>75</b>	<b>107</b>	<b>123</b>	<b>163</b>	<b>262</b>	<b>280</b>	<b>323</b>	<b>350</b>	<b>202</b>	<b>182</b>	<b>123</b>		<b>2,190</b>
Stray	64	86	90	147	240	260	305	304	177	146	105		1,924
Owner Surrendered	11	20	30	16	22	20	18	46	25	35	18		261
Returned Adoption	-	-	-	-	-	-	-	-	-	1	-		1
Transferred In	-	1	3	-	-	-	-	-	-	-	-		4
<b>Live Release</b>	<b>44</b>	<b>60</b>	<b>67</b>	<b>107</b>	<b>183</b>	<b>190</b>	<b>152</b>	<b>171</b>	<b>180</b>	<b>111</b>	<b>72</b>		<b>1,337</b>
Adopted	2	3	8	1	5	5	2	6	2	2	5		41
Returned to Owner	-	4	-	-	-	-	2	-	2	-	1		9
Transferred to Rescue	42	53	59	106	178	185	148	165	176	109	66		1,287
<b>Euthanized</b>	<b>30</b>	<b>46</b>	<b>40</b>	<b>56</b>	<b>71</b>	<b>78</b>	<b>77</b>	<b>234</b>	<b>63</b>	<b>54</b>	<b>34</b>		<b>783</b>
<b>Died/Lost in Care</b>	<b>-</b>	<b>1</b>	<b>1</b>	<b>9</b>	<b>6</b>	<b>5</b>	<b>5</b>	<b>3</b>	<b>3</b>	<b>12</b>	<b>1</b>		<b>46</b>
Died	-	1	1	3	3	4	4	3	3	5	1		28
Missing	-	-	-	6	3	1	1	-	-	7	-		18
<b>Month End Animal Count</b>	<b>5</b>	<b>5</b>	<b>20</b>	<b>11</b>	<b>12</b>	<b>19</b>	<b>108</b>	<b>52</b>	<b>8</b>	<b>13</b>	<b>29</b>		<b>n/a</b>
<b>Fostered</b>	<b>-</b>	<b>1</b>	<b>-</b>	<b>1</b>	<b>-</b>	<b>1</b>	<b>1</b>	<b>-</b>	<b>2</b>	<b>1</b>	<b>-</b>		<b>7</b>
<b>Spayed/Neutered</b>	<b>3</b>	<b>5</b>	<b>2</b>	<b>2</b>	<b>1</b>	<b>-</b>	<b>-</b>	<b>-</b>	<b>-</b>	<b>-</b>	<b>-</b>		<b>13</b>

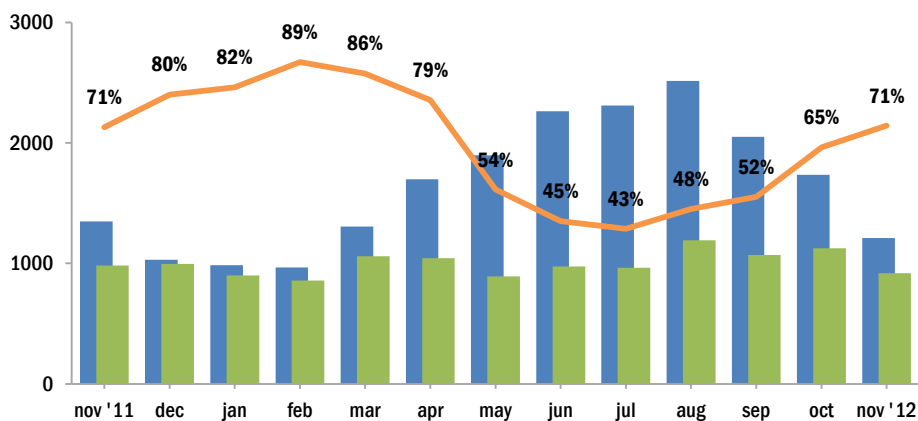
## Intake & Live Release Combined (Dogs & Cats)



## Dogs



## Cats



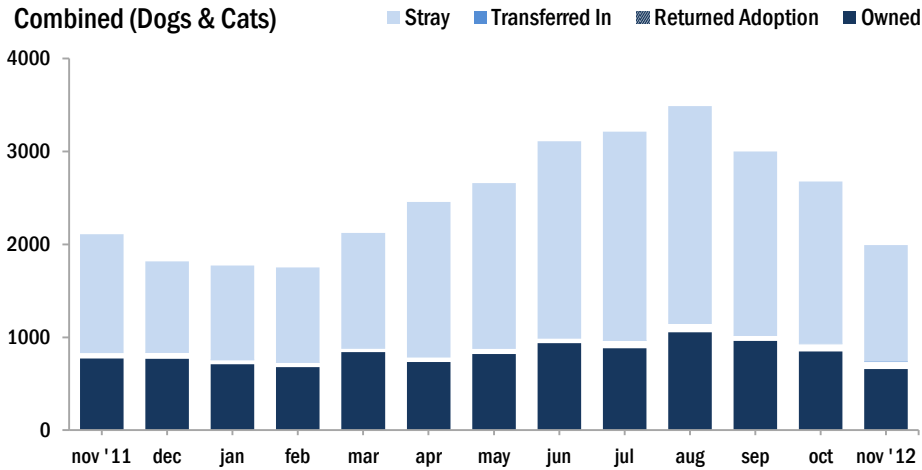
### NOTES:

**Live Release Rate**, as dictated by the Asilomar Accords, the industry standard (see: [asilomaraccords.org](http://asilomaraccords.org)), is calculated by dividing Total Live Release (adoptions, transfers to partner organizations, and returns to owner) by Total Outcomes (adoptions, outgoing transfers, returns to owner, and euthanasias).

The Live Release Rate does not include animals that died or were lost in care, animals that were dead on arrival, or administrative transfers.

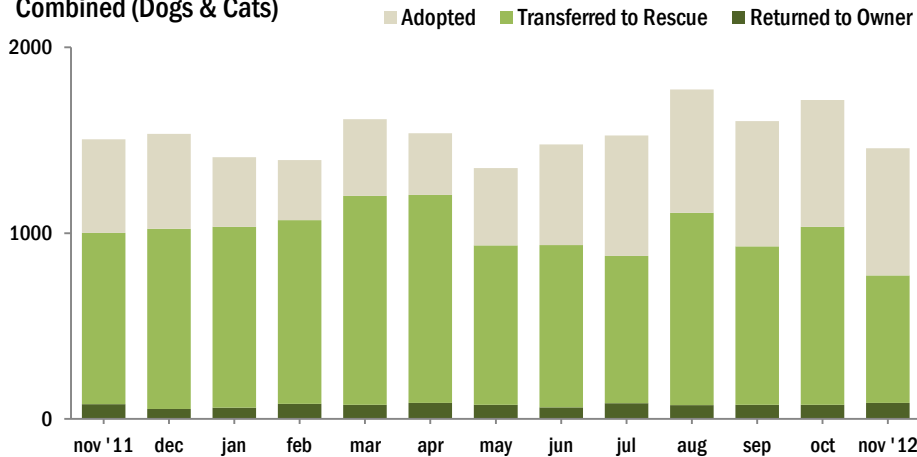
**Source of Intake**

Combined (Dogs & Cats)

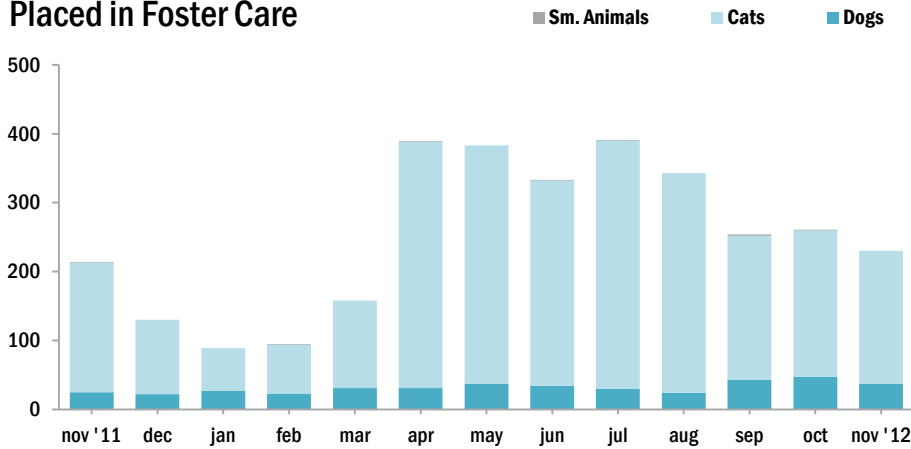


**Live Releases**

Combined (Dogs & Cats)



**Placed in Foster Care**



The Foster Care Program is one of the many life saving arms of ACCT Philly. The primary reason for foster care is to provide a temporary home for a potentially adoptable animal whose current condition is not manageable in a shelter setting and to alleviate overcrowding. ACCT Philly receives more animals than there is space, and so moving animals into foster homes not only saves them, but also ensures that newly arriving animals have cage space.

**Spay/Neuter Surgeries**

