

Animal Care & Control Team of Philadelphia

2014 Shelter Statistics - All Animals

	Jan	Feb	Mar	Apr	May	Jun	Jul	Aug	Sept	Oct	Nov	Dec	Total
Intake	1,618	1,349	1,879	2,187	2,814	2,704	3,003	3,225	-	-	-	-	18,779
Stray	937	753	1,197	1,443	1,918	1,882	1,998	2,256					12,384
Surrendered by Owner	672	591	674	744	889	814	983	962					6,329
Transferred In	9	5	8	-	7	8	22	7					66
Live Release	1,286	1,132	1,387	1,495	1,750	1,760	1,745	1,825	-	-	-	-	12,380
Adopted	601	514	544	527	513	629	659	922					4,909
Returned to Owner	64	64	93	83	112	96	98	91					701
Transferred to Rescue	549	496	676	792	989	901	759	529					5,691
Released	72	58	74	93	136	134	229	283					1,079
Total Euthanized	388	291	325	450	513	746	1,052	1,209	-	-	-	-	4,974
Owner Intended Euthanasia	33	49	52	49	69	87	92	90					521
All Other Euthanasia	355	242	273	401	444	659	960	1,119					4,453
Died	21	14	24	71	44	121	75	156					526
Missing	1	5	6	5	17	30	41	24					129

Live Release Rate	77%	80%	81%	77%	77%	70%	62%	60%					71%
-------------------	-----	-----	-----	-----	-----	-----	-----	-----	--	--	--	--	-----

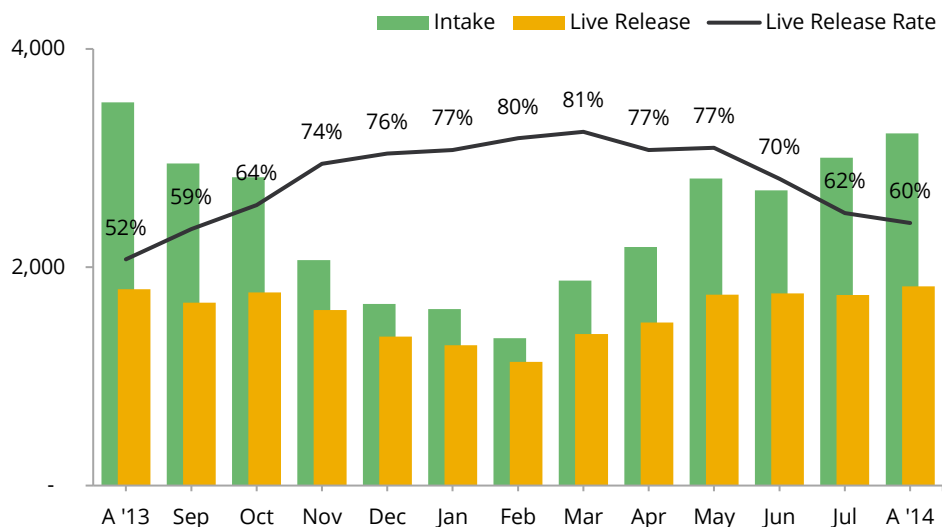
Live Release Rate = Live Release / (Live Release + Total Euthanized)

Adjusted Live Release Rate	78%	82%	84%	79%	80%	73%	65%	62%					74%
----------------------------	-----	-----	-----	-----	-----	-----	-----	-----	--	--	--	--	-----

Adjusted Live Release Rate = Live Release / (Live Release + (Total Euthanized - Owner Intended Euthanasia))

The July Live Release Rate does not include 116 animals that died or were lost in care, or 223 animals that were dead on arrival.

Month End Animal Count	1,019	922	1,057	1,223	1,714	1,762	1,855	1,869					n/a
Placed in Foster Care	146	130	233	366	476	406	359	467					2,583
Spay/Neuter Surgeries	634	585	658	709	672	973	974	1,058					6,263



Animal Care & Control Team of Philadelphia

2014 Shelter Statistics - Dogs

	Jan	Feb	Mar	Apr	May	Jun	Jul	Aug	Sept	Oct	Nov	Dec	Total
Intake	674	591	686	677	726	733	767	783	-	-	-	-	5,637
Stray	344	301	397	337	379	382	393	391					2,924
Surrendered by Owner	326	288	286	340	344	345	372	391					2,692
Transferred In	4	2	3	-	3	6	2	1					21
Live Release	440	455	492	503	555	494	511	489	-	-	-	-	3,939
Adopted	122	123	126	116	80	102	133	147					949
Returned to Owner	50	55	75	68	96	80	71	75					570
Transferred to Rescue	268	277	291	319	379	312	307	267					2,420
Released	n/a	n/a	n/a	n/a	n/a	n/a	n/a	n/a	n/a	n/a	n/a	n/a	n/a
Total Euthanized	223	152	161	199	157	203	271	273	-	-	-	-	1,639
Owner Intended Euthanasia	19	27	30	24	31	50	43	49					273
All Other Euthanasia	204	125	131	175	126	153	228	224					1,366
Died	1	5	1	4	-	5	9	8					33
Missing	-	-	3	1	-	-	4	2					10

Live Release Rate	66%	75%	75%	72%	78%	71%	65%	64%					71%
--------------------------	-----	-----	-----	-----	-----	-----	-----	-----	--	--	--	--	-----

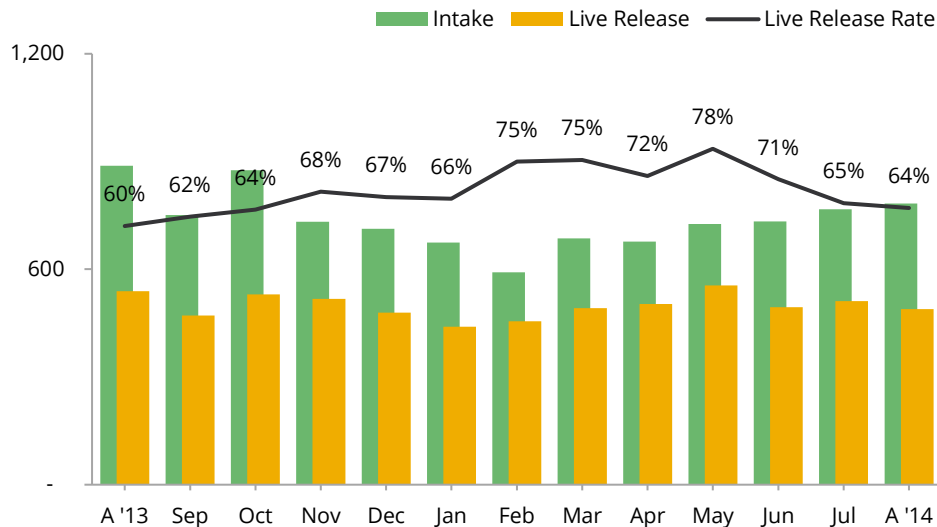
Live Release Rate = Live Release / (Live Release + Total Euthanized)

Adjusted Live Release Rate	68%	78%	79%	74%	81%	76%	69%	69%					74%
-----------------------------------	-----	-----	-----	-----	-----	-----	-----	-----	--	--	--	--	-----

Adjusted Live Release Rate = Live Release / (Live Release + (Total Euthanized - Owner Intended Euthanasia))

The July Live Release Rate does not include 13 animals that died or were lost in care, or 105 animals that were dead on arrival.

Month End Animal Count	220	199	228	199	214	245	218	229					n/a
Placed in Foster Care	35	31	19	13	27	22	25	19					191
Spay/Neuter Surgeries	170	184	166	162	148	141	148	149					1,268



Animal Care & Control Team of Philadelphia

2014 Shelter Statistics - Cats

	Jan	Feb	Mar	Apr	May	Jun	Jul	Aug	Sept	Oct	Nov	Dec	Total
Intake	855	677	1,112	1,370	1,755	1,682	2,048	2,195	-	-	-	-	11,694
Stray	556	403	738	993	1,301	1,284	1,466	1,650					8,391
Surrendered by Owner	294	271	369	377	450	396	562	539					3,258
Transferred In	5	3	5	-	4	2	20	6					45
Live Release	777	628	844	913	958	1,060	1,120	1,220	-	-	-	-	7,520
Adopted	477	386	403	392	428	519	526	773					3,904
Returned to Owner	14	9	18	15	15	16	27	14					128
Transferred to Rescue	223	187	367	430	421	403	357	202					2,590
Released	63	46	56	76	94	122	210	231					898
Total Euthanized	148	113	141	197	293	459	714	820	-	-	-	-	2,885
Owner Intended Euthanasia	14	22	21	25	38	35	47	41					243
All Other Euthanasia	134	91	120	172	255	424	667	779					2,642
Died	20	9	19	66	40	89	60	145					448
Missing	1	5	2	3	6	25	32	18					92

Live Release Rate	84%	85%	86%	82%	77%	70%	61%	60%					72%
--------------------------	-----	-----	-----	-----	-----	-----	-----	-----	--	--	--	--	-----

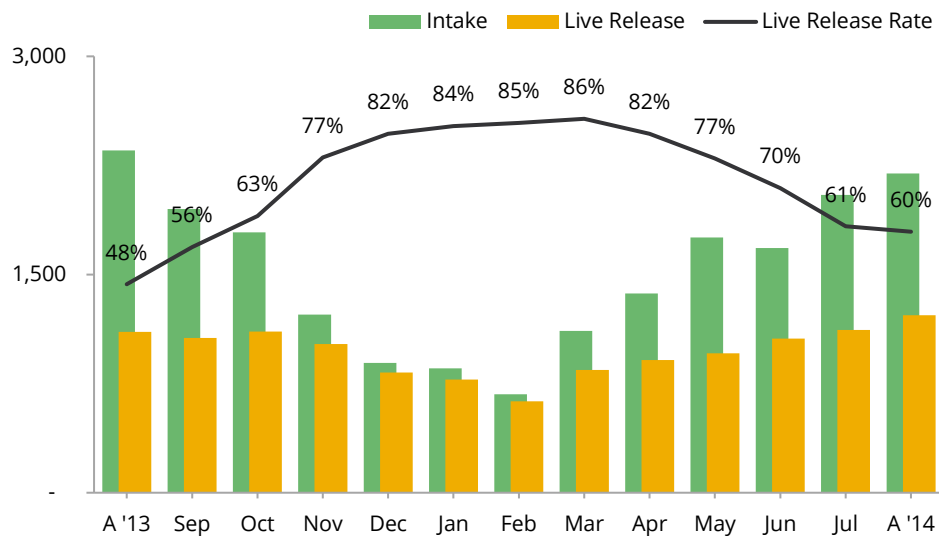
Live Release Rate = Live Release / (Live Release + Total Euthanized)

Adjusted Live Release Rate	85%	87%	88%	84%	79%	71%	63%	61%					74%
-----------------------------------	-----	-----	-----	-----	-----	-----	-----	-----	--	--	--	--	-----

Adjusted Live Release Rate = Live Release / (Live Release + (Total Euthanized - Owner Intended Euthanasia))

The July Live Release Rate does not include 92 animals that died or were lost in care, or 86 animals that were dead on arrival.

Month End Animal Count	782	700	804	994	1,451	1,502	1,626	1,621					n/a
Placed in Foster Care	111	99	208	351	449	384	334	448					2,384
Spay/Neuter Surgeries	464	401	487	546	523	832	826	909					4,988



Animal Care & Control Team of Philadelphia

2014 Shelter Statistics - Small Animals & Wildlife

	Jan	Feb	Mar	Apr	May	Jun	Jul	Aug	Sept	Oct	Nov	Dec	Total
Intake	89	81	81	140	333	289	188	247	-	-	-	-	1,448
Stray or Wildlife	37	49	62	113	238	216	139	215					1,069
Surrendered by Owner	52	32	19	27	95	73	49	32					379
Transferred In	-	-	-	-	-	-	-	-					-
Live Release	69	49	51	79	237	206	114	116	-	-	-	-	921
Adopted	2	5	15	19	5	8	-	2					56
Returned to Owner	-	-	-	-	1	-	-	2					3
Transferred to Rescue	58	32	18	43	189	186	95	60					681
Released	9	12	18	17	42	12	19	52					181
Total Euthanized	17	26	23	54	63	84	67	116	-	-	-	-	450
Owner Intended Euthanasia	-	-	1	-	-	2	2	-					5
All Other Euthanasia	17	26	22	54	63	82	65	116					445
Died	-	-	4	1	4	27	6	3					45
Missing	-	-	1	1	11	5	5	4					27

Live Release Rate	80%	65%	69%	59%	79%	71%	63%	50%					67%
--------------------------	-----	-----	-----	-----	-----	-----	-----	-----	--	--	--	--	-----

Live Release Rate = Live Release / (Live Release + Total Euthanized)

Adjusted Live Release Rate	80%	65%	70%	59%	79%	72%	64%	50%					67%
-----------------------------------	-----	-----	-----	-----	-----	-----	-----	-----	--	--	--	--	-----

Adjusted Live Release Rate = Live Release / (Live Release + (Total Euthanized - Owner Intended Euthanasia))

The July Live Release Rate does not include 11 animals that died or were lost in care, or 32 animals that were dead on arrival.

Month End Animal Count	17	23	25	30	49	15	11	19					n/a
Placed in Foster Care	-	-	6	2	-	-	-	-					8
Spay/Neuter Surgeries	-	-	5	1	1	-	-	-					7

